

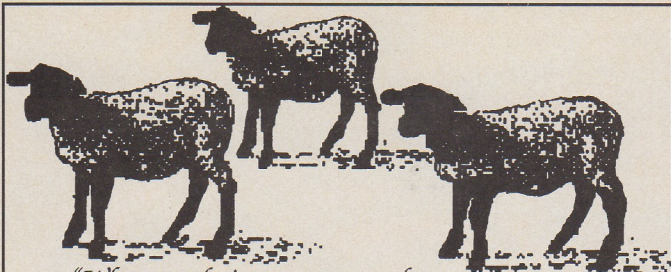
24 KARROTS





BY SUSAN GUAGLIUMI

Sometimes it takes a stick, this time 2 dozen carrots. Susan's solid gold idea for this sweater (as well as for a few others that are still just ideas) inspired the theme for an entire issue. (CONTINUES ON PAGE 66)



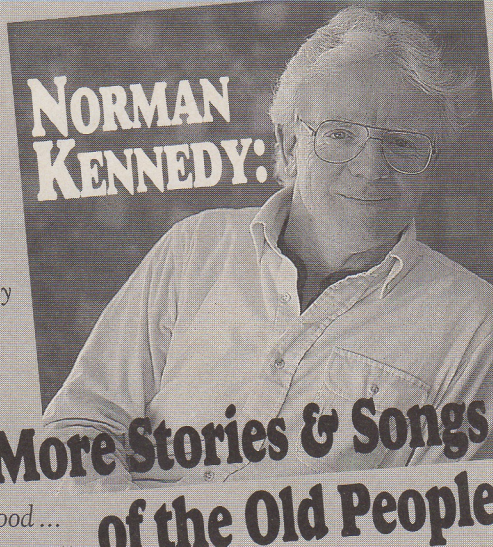
"When you knit...use our wool,
the selection is superb."

Tools & yarns for the fiber gourmet. Natural fibers, for spinning, knitting & weaving. Knitting tools in wood, bamboo, sterling & bronze! Ashford spinning equipment, Bond Frames, Beka weaving tools & wood sock blockers. Sterling fiber animal jewelry, sheepskins, hats & mittens. Huge selection of children's fiber & animal books. To order catalog, send \$5.00 which is refundable from first order.

Wild River Wool Ranch

10067 Perkins Avenue North, Dept. 101A
Stillwater, Minnesota 55082-9227
(612) 439-9574 Fax: (612) 439-6665

Listen to **More Stories & Songs of the Old People**, sit at your loom, and hear the echoes of Scotland – the way only Norman Kennedy can sing them. Norman tells the stories and sings the songs that kept his people going – through hard times and good...



Norman's new cassette opens a window to the old way of life: over 36 minutes of delightful story telling and 35 minutes of bonnie singing.

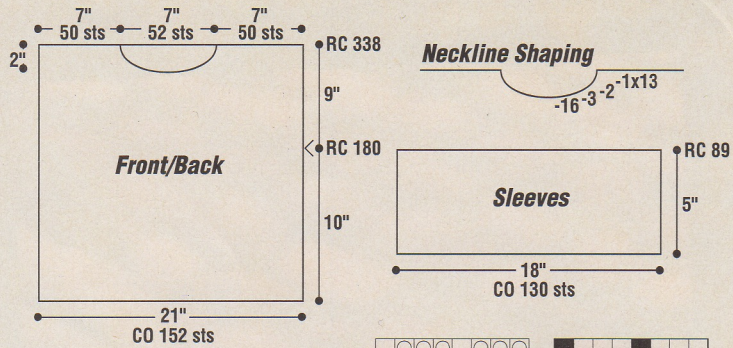
And don't miss the original, Volume I, **Songs & Stories of the Old People**, over 52 minutes of Norman's best.

Only \$10.95 each, plus \$1.55 postage and handling (\$12.50 total); or order two for \$21.95 (and save over \$3).

At your local store or

Call 1-800-232-5648 (MASTERCARD; VISA; DISCOVER)

Or send your check to:
Golden Fleece Publications, P.O. Box 1525, Sioux Falls, SD 57101-1525



(CONTINUED FROM PAGE 17)

Size. 42" finished bust to fit actual bust measurement up to 40". Short, boxy styling. To alter width, add or subtract 7.25 sts per 1"; to change length, add or subtract 18 rows per 1".

Machine. Standard gauge punch card or electronic; no ribber needed. Sample was knitted on a Studio by White SK840 electronic.

Pattern. With cam lever set to tuck, knit 4 rows per color (green/brown/black). Purl side is the RS. A yarn changer is helpful, but not essential.

Electronic pattern card. Place N1 cam at zero to center the pat, point cams one ndl in from ea edge to prevent edge ndls from tucking.

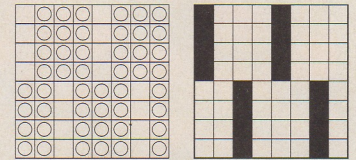
Materials. A. Newton's Yarn Country's 'Pima,' (5/2 100% mercerized cotton; 2200 yds/lb) in the following colors/quantities: Clove (green) 10 oz, Black 5 oz, Brown 5 oz, Bronze (orange) 3 oz. **B.** 'Candlelight' (metallic, nylon; 1250 yds/9 oz) in gold 3 oz. **C.** Optional: gold and orange seed beads. **D.** Waste yarn.

Gauge. Stitch Size 6 or to get gauge as follows: Tuck st pat 7.25 sts and 18 rows equal 1".

Carrots. The carrots are knitted in plated stockinette st; the gold is threaded in the plating feeder and the orange in the main feeder. If your machine does not have a plating feeder, you can thread the 2 yarns together in the same yarn feeder, but the color will not be as even.

The carrots all begin 12 to 17 sts wide, dec gradually to a single st over 40 to 50 rows. For ea carrot, cut 8 strands of green, approx 18" long and set aside.

With green, e-wrap over 12 ndls (for example), ending on the carr side and leaving



Punch card pat Electronic pat

the ndls in holding position (HP). Thread the carr with green yarn. Weave all 8 of the cut strands of green (handle as one thick yarn) over and under the ndls in HP. Set carr to knit ndls back from HP and knit one row. Change to gold/orange plating threading for carrot and knit 40 to 50 rows plated stockinette gradually dec to a single st. Cut the yarn and pull through the last st to secure.

To finish ea carrot, gather the top by pulling on the ends of the green strands and tie in a simple, overhand knot to secure. **Twist the carrot tops:** Hold 2 strands of green in ea hand. Twist ea pair of threads to the R until they are over-twisted and kink up when you temporarily relax the tension on them. Hold all 4 twisted strands together in one hand and twist to the L. Tie a knot to secure the twist. Repeat for remaining green strands.

Pockets. Purl side is the RS of pockets. Knit 2 alike. With waste yarn (wy), CO 60 sts and knit some rows. Change to main yarns and SS6 and knit 60 rows stockinette, knitting 2 rows green/ brown/ black. BO top edge loosely. Knit pocket bands in green, over 30 sts as described for bands. To attach bands to pocket tops, rehang pocket tops over 30 ndls to reduce and gather the width. See general directions for knitting and applying bands.

Bands. This band is applied to BO or closed CO edges (edges that won't ravel). Because it totally encloses the edge of the fabric, it is also an

excellent band to use for cut and sew edges.

With wy, CO (CO 30 sts for pocket bands*; 86 sts for sleeve bands*; 118 sts for neckband; 130 sts for hem bands*) and knit some rows. Change to green and SS6 and knit 6 rows for sleeve, pocket, and neckbands (12 rows for hem bands). Knit one row at SS10, followed by 6 (12) rows SS6. Knit some rows of wy and drop from the machine. (If you leave long tails at the beginning and end, you'll have enough length to BO when you attach the band to the garment pieces later on.) *Note: the garment edge is gathered and reduced to the same number of sts as the band when rehanging for these (*) bands.

To attach bands: With the RS of the garment facing you, rehang over the specified number of ndls, poking the ndls through the fabric 1/4" in from the edge. Bring the ndls to HP with the garment behind the open latches. With the WS of the band facing you, fold back the wy and rehang the first row of the band sts into the hooks of the same ndls. Close the latches and use a flat ndl pusher to *slowly and carefully* push the ndl butts back to normal working position. The garment sts will slide over the closed latches as the band sts are pulled through them. Only the band sts should end up in the hooks of the ndls. It is important to make sure that the latches remain closed throughout this step. Fold back the wy on the 2nd edge of the band and rehang the last row of sts into the same ndl hooks. Do not knit a row. Simply BO loosely by catching the yarn behind one sinker post as you work.

Back. CO with e-wrap method over 152 ndls. Knit in tuck st pat, changing colors every 4 rows to RC180. Tag edge sts to mark armhole and continue to RC338. (Only the last 2 rows of pat will be green to allow for color match at shoulder seams.)

Front. CO and knit same as for Back to RC30 to begin neck shaping. Make a note of the pat row. With carr on R

and set to HP, hold 68 ndls at L. Knit 1 row. BO 16 sts at center and knit 2 rows. Continue BO at neck edge E time carr is on the L 3 sts, 2sts, (1 st) 13x. At RC338 scrap off the rem 50 shoulder sts. Turn back RC and pat card to shape L side same as R.

Sleeves. Knit 2 alike. CO with e-wrap method over 130 ndls and knit 88 rows of Tuck st pat, ending with 1 row of green stockinette. Scrap off.

Finishing. Lightly steam all pieces to facilitate handling. Remember that purl side is the RS for garment and pocket pieces. Garment pieces can be seamed by rehanging on the machine, crocheting, or hand sewing. Check all sts before removing any waste knitting from live sts.

Apply bands to lower edges of Back, Front, and sleeves, to top edge of pockets, gathering as needed to fit the band and number of ndls instructed. To gather, ease the fabric evenly onto the ndls. Lower edge of each pocket should be hung on the same ndls as lower edge of Front when joining band to Front. Pocket placement begins 20 ndls from ea edge and ea pocket should be gathered onto 30 ndls. Both garment and pocket sts should be behind the open latches when placing band sts in the hooks. Join one shoulder seam. Apply neckband and then join 2nd shoulder seam. Fold back waste knitting to join sleeves to body between yarn tags. Sew side and underarm seams. Carrots (24) are hand-sewn to the body of the garment, with beaded accents added as desired. ~

Susan Guagliumi is the education director for Studio by White Knitting Machines. She oversees all dealer training, production of training and support materials, video and workbook projects, as well as advertising and public relations programs. She has articles and designs published in Threads, Vogue Knitting, Fashion Knitting, Modern Machine Knitting, and others. She is the editor of Studio by White Design Magazine and author of Hand Manipulated Stitches published by Taunton Press.

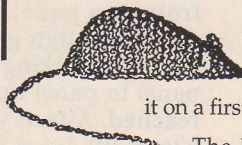
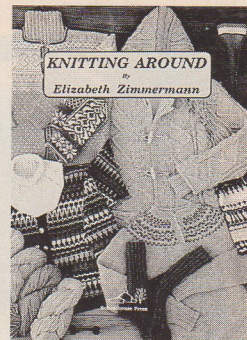
Elizabeth Zimmermann

KNITTING AROUND VIDEO SERIES

Elizabeth's & Meg's 9 instructional videos are now amalgamated into one package to save you over \$100. All 6 hours (3 vhs cassettes) for \$95.00 + \$3.50 postage.

Knitting Around — the book — (with Elizabeth's autobiographical *Digressions*) is \$24.95 + \$2.75 postage.

Order the book and tapes together before Jan '93, and we'll pay the postage: \$119.95 ppd.



CATNIP MOUSE KIT

'92 was a fairly good catnip year on Cary Bluff. We have a limited supply and offer it on a first-come, first-serve basis.

The KIT contains instructions (as seen in this issue), enough mouse-colored Shetland wool to knit 2 mice, and a bag o' *Mikey's Killer Catnip* to fill 1 plump mouse; or 2 mice if you stretch it with wool ends or other stuffing. \$6.95 ppd. (\$5.95 if we run out of catnip).

With any order you will receive our list of over 100 knitting books (including SALE books), tools & videos. For samples of 9 types of wool: add \$2.00.

Send to:

SCHOOLHOUSE PRESS
6899 Cary Bluff
Pittsville, WI 54466

(715) 884-2799
Visa & Master Card



Supplying handknitters since 1959

HANDCRAFTED PORCELAIN BUTTONS

MADE IN ENGLAND



7/8" - \$3.50

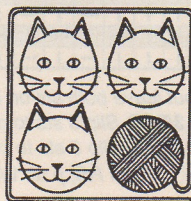
5/8" - \$3.00

Machine Washable

"Tabby" sweater kit with buttons - \$125.00
featured in Winter '91 **KNITTERS**.

For picture of complete selection of buttons, send \$2.00.

Call: 1-800-489-4969.



THREE KITTENS YARN SHOPPE

805 Sibley Mem. Hwy.
St. Paul, MN 55118

612-457-4969

Wholesale inquiries.