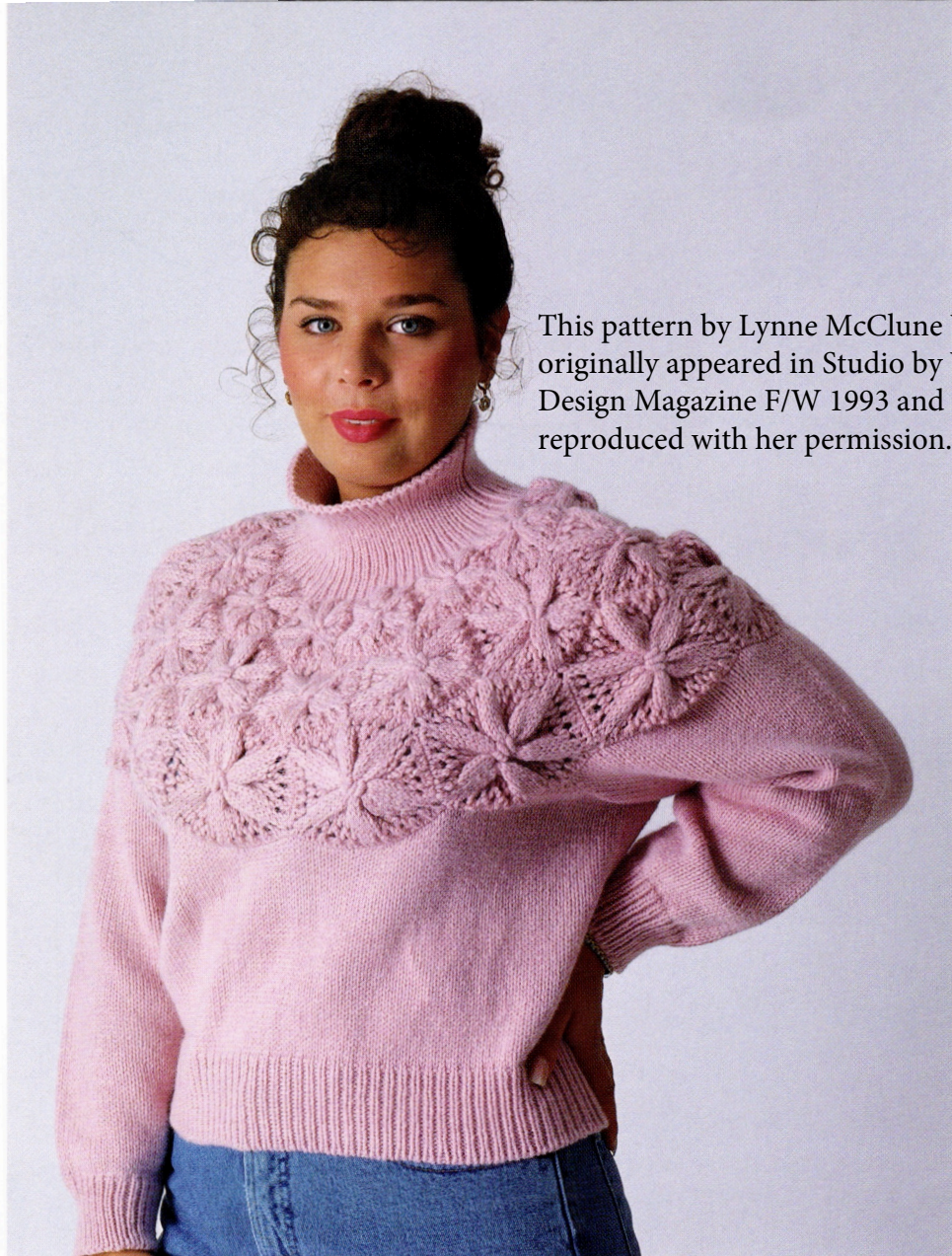


Lynne
Wohlsen

Flower Power

This feminine sweater features a yoke constructed of graduated "flowers" knitted in punch lace and gathered to shape. The original inspiration for this design came from Makoto Takeuchi when she visited us last year from the factory in Japan.



This pattern by Lynne McClune Wohlsen originally appeared in Studio by White Design Magazine F/W 1993 and is reproduced with her permission.

20

Size: Women's Small (Medium, Large) to fit actual bust measurement 34 (36, 38)".

Stitch Size: 6 or to get gauge in stockinet.

Gauge: 5 STS/6.75 Rs = 1".

Machine: SK860 (6.5 mm mid-gauge).

Accessories: SR860 ribber and EC-1 Electronic Controller.

Materials: Tahki "Sable", 70% Merino wool/30% French Angora with 140 yd/1.75 oz ball, 9 (10, 10) balls color #1601 for MC. 1 cone matching serger thread for CC.

Knitting Directions

Body of garment is knitted in stockinette; yoke pieces are punch lace.

Back: C/O with scrap and ravel over 96 (100,106) NDLS for 1X1 rib. COR. With MC, rep C/O and K 28 Rs rib with SS 2/2. Tr STS to MB. RC 000. With SS 6, K to RC 86 (90, 94). COR. At beg of next 2 Rs, B/O 7 (9,12) STS. Make 1 ff dec each side EOR 8 times. At same time, at RC 94 (98,102), divide for yoke shaping by SR. COR with Russel levers (I). Place center 22 NDLS plus all NDLS at L in HP. KWK. Cont SR EOR at center as fol: 7, 5, 4, 3. At RC 104 (108, 112) only 3 NDLS rem in WP. Place them in HP. S/O 22 STS at RT. COL. Ret all NDLS including and to L of #12 L to WP and rep for second side. S/O rem 66 STS.

Front: Same as back to RC 72 (76, 80). COR with Russel levers (I) to beg yoke shaping with SR. Place center 20 NDLS plus all NDLS at L in HP. KWK. Cont SR EOR at center as fol: 6, 4 (2x), 3 (2x), 2 (3x), 1. At same time, at RC 86 (90, 94), B/O 7 (9, 12) STS, K 2 Rs, then ff dec 1 ST EOR 2 times. At RC 92 (96, 100) 2 NDLS rem in WP. Place them in HP. COL. Ret all NDLS including and to the L of #11L to WP and rep for second side. S/O rem 78 STS.

Sleeve: C/O with scrap and ravel over 56 NDLS for 1X1 rib. COR. With MC, rep C/O and K 20 Rs rib with SS 1/1. Tr STS to MB. With SS 6, K to RC 112 (118, 124) inc 1 ST every 6 (6, 5) Rs 6 (18, 9) times, then 1 ST every 7 (0, 6) Rs 10 (0, 12) times to 88 (92, 98) STS. COR. Place 18 NDLS at RT of 0 plus all NDLS on L in HP. B/O 7 (9, 12) STS at RT edge. KWK. At RT, ff dec 1 ST EOR 2 times while SR 9, 5 STS at center. At RC 118 (124, 130) 3 NDLS REM IN WP. S/O 17 STS at RT. COL. Ret all NDLS at L of and including #9L to WP. B/O 7 (9,12) STS at L edge. KWK. At L, ff dec 1 ST EOR 8 times. At center, SR 3 STS 3 times, 2 STS 5 times. At RC 130 (136, 142) 2 NDLS rem in WP. S/O all 47 STS. Knit second sleeve in reverse.

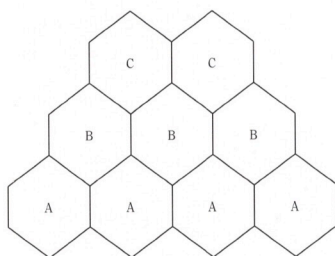
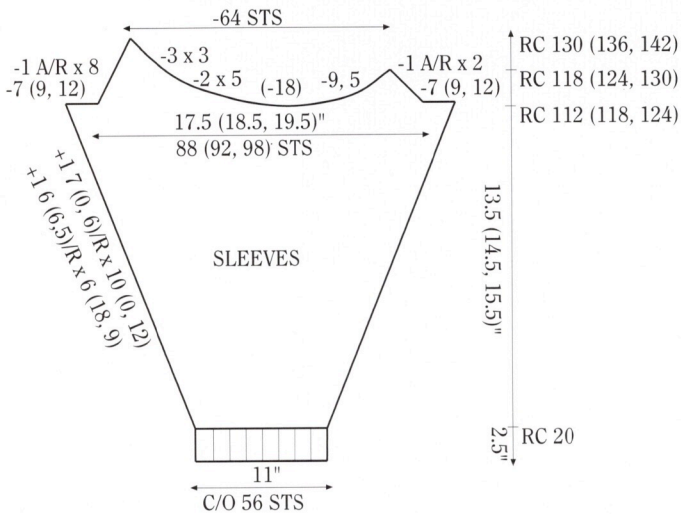
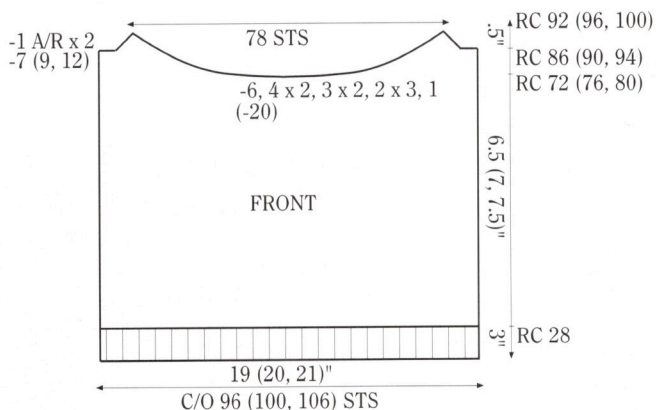
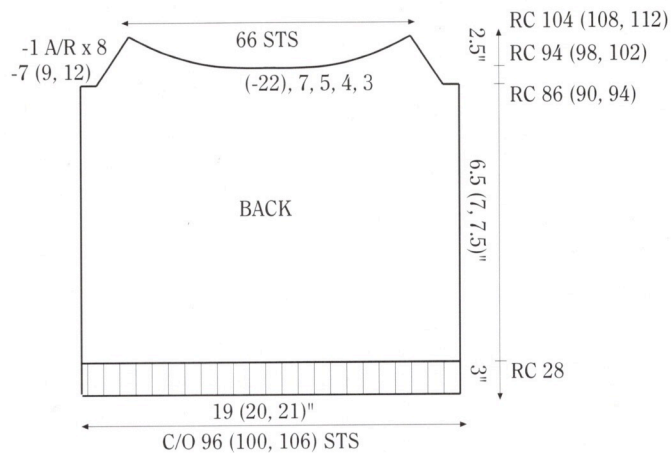
Yoke: The yoke is composed of 36 individual hexagonal "flowers" knitted in 3 sizes (12 each size) and sewn together. Size A has 11 STS/side, B has 9, and C has 7. All are knitted in punch lace with MC in feeder 1 and CC in feeder 2, N-1 cam at 0 and point cams 1 NDL in from edge. EC-1 pattern switches #1 and #2L lights.

- For each size, C/O with scrap and ravel.
 - A - 68 STS (11 STS x 6 reps +2 seaming STS)
 - B - 56 STS (9 STS x 6 reps +2)
 - C - 44 STS (7 STS x 6 reps + 2)
- K 1 R in stockinet with MC.
- Set pat card to appropriate design. Add CC. Inspection light off.
- K designated Rs in pattern.
 - A - 10 Rs
 - B - 8 Rs
 - C - 6 Rs
- K 1 R in stockinet with MC.
- Gather off with long tail of yarn and fasten into circle.
- Join both ends with blind stitch.
- Make 12 in each size.

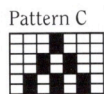
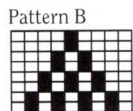
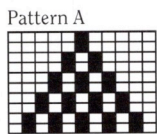
Pin each circle into a hexagon (6 sides) and steam. Work 3 bullion (embroidery) knots over center hole.

First join size A motifs together into 1 strip as follows:

- P/U 1 side of 1 motif onto 11 NDLS with RT side facing you. P/U 1 side of next motif onto same NDLS with wrong side facing you. Push NDLS to D pos and using tail of yarn, latch tool B/O both layers tog. Cont joining "A" motifs by P/U the directly opposite side of the last hexagon for the next joining.



Yoke is constructed by assembling motifs in strips, then joining the strips as shown.



Each of the motifs is knitted with a slightly different design card.



2. Join motifs B then C in same manner over 9 and 7 NDLS, respectively.
3. Join strips A and B: with RT side facing you, P/U 11 STS from one side of a single "A" motif and, doubling 2 STS, hang on 9 NDLS. P/U 11 STS from one side of the next "A" onto 9 NDLS. With wrong side facing you, P/U 18 STS from one "B" motif and hang on the same NDLS. Latch tool B/O both layers tog. Cont until entire 2 strips are joined.
4. Join strips B and C: fol directions above hanging 9 STS from each side of B onto 7 NDLS.

Neckband: Fold back scrap and P/U live STS from strip C onto 120 NDLS, doubling 2 STS at each side of each individual motif. COR. K 1 R with SS 6. At each side, push 1 empty NDL to D pos. With tail of yarn, e-wrap NDL at RT; with yarn, e-wrap NDL at L. Tr STS for 1X1 rib. Hang comb. With SS 1/1, knit 33 Rs; K 1 R at

10/10. Tr STS to MB. Crochet B/O. Seam neck band. Seam yoke by re-hanging STS as before and B/O.

Finishing Directions

Remove scrap and ravel from front and back rib C/O edges. Block all pieces lightly. Seam sleeves to front and back, leaving L front seam open. Since yoke is now circular, it is attached in sections; when finished with one section, move the piece to other side of MB to have enough NDLS for next section. With RT side facing you, fold down scrap and P/U live STS from front onto 76 NDLS, doubling end STS for seams. Determine center of yoke, fold scrap out of the way and place open STS from edge of "A" strip onto same NDLS, placing center at 0. With MC, B/O both layers tog. P/U 62 STS from sleeve, 64 from back, and 62 from sleeve. Cont until yoke is attached. Secure ends. Remove all scrap. Sew rem seams.