



Peacock Tails

The hand transfers in Susan Guagliumi's sweater are minimal, but the lace effect is maximal! "Needles out of work create wide ladders that are reduced as the needles are returned to work. The technique is perfect for hand-manipulated, simple machines (and handknitters!) because this method of creating lace is not one that automatic lace carriages can do."

reduced as the needles are returned to work. The technique is perfect for hand-manipulated, simple machines (and handknitters!) because this method of creating lace is not one that automatic lace carriages can do."

Materials. **A.** Grignasco's 'Florette 2000' from Anny Blatt (50% mohair/50% dralon; 50g/approx 191 yds): 10 (10, 11) skeins in color #045 gray. **B.** Contrasting waste yarn. **C.** 6.5 mm mid-gauge knitting machine (no ribber required) or handknitting ndls size 5, or size to obtain gauge. Sample was knitted on the Studio by White LK-150. **D.** Six 5/8" buttons; cabone rings, crocheted over, were used on our cardigan. **Gauge.** 20 sts and 26 rows equal 4" in peacock tails pat knit with (suggested) st

size 5 or handknitting ndl.

Sizes. Slightly oversized women's S (M, L) with finished chest measurement 42 (45, 49)".

Measurements. See schematic.

Notes. 1. Machine knitters: begin all garment pieces with waste yarn. **2.**

Handknitters: CO sts called for in main yarn; knit 1 row, purl 1 row; follow hand-knit variation of Peacock st; work to lengths shown on schematic if you find that more convenient than row counts.

Peacock tails pat. Center first rep on the bed and then work out to each side. Reps are alternated, so once the first rep is established, it is easy to see where the next should begin. Half reps at the side edges are OK. The shaded rows of the chart are setup rows only and should not be knit. *Transfer the sts from ndls 1, 2, 3 to ndl 4; then transfer the sts from ndls 5, 6, 7 to ndl 4. Place all empty ndls in non-working position (NWP). There are now 7 sts on the 4th ndl; pull it out to holding position

(Continues on p. 92)

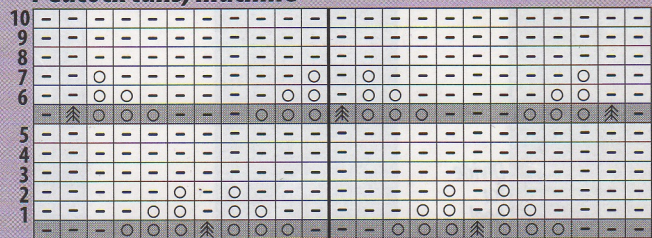
Knitter's Pattern: Peacock tails

Handknit variation

Mult of 10 + 3 sts. **7 to 1 dec.** Sl 4 tog as if to knit, k3tog, p4sso. **4 to 1 dec.** Sl 1 knitwise, k3tog, pssso. The 7 to 1 dec takes a little care; but by modifying the pattern to keep the decs on the RS rows, this stitch is enjoyable as well as dramatic. **1. (RS)** K3, *yo2, 7 to 1 dec, yo2, k3; rep from*. **2. *P3,** p1 into yo2, yo, p1, yo, p1 into yo2; rep from*, end p3. **3. K5,** *yo, k1, yo, k7; rep from*, end last rep k5. **4 & 6. Purl.** **5. Knit.** **7. K1,** 4 to 1 dec, yo2, *k3, yo2, 7 to 1 dec, yo2; rep from*, end k3, yo2, 4 to 1 dec, k1. **8. P2,** yo, p1 into yo2, *p3, p1 into yo2, yo, p1, yo, p1 into yo2; rep from*, end p3, p1 into yo2, p2. **9. K2,** yo, *k7, yo, k1, yo; rep from*, end last rep k2. **10 & 12. Purl.** **11. Knit.** Rep Rows 1-12.

These 2 charts are very similar. A couple of differences do highlight basic differences in process and perspective: **1. Machine knitters** always face WS of fabric, so that's what their charts depict. **Handknitters' charts** depict the RS of the fabric but they often must translate to work WS rows. **2. Handknitters** have no way to set up a row without knitting it.

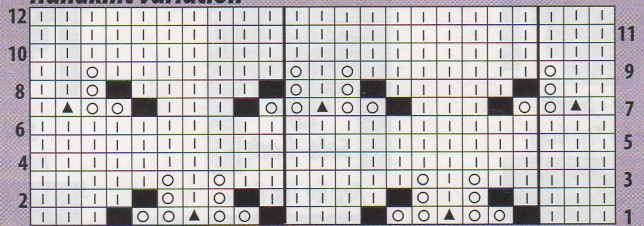
Peacock tails, machine



Center at 0

- Empty ndl in non-working position (NWP)
 - ◻ Purl st as seen on machine
 - ⌘ 7 sts on ndl: 3 sts at L & 3 sts at R
 - Set up row, do not knit
- transferred to central ndl

Handknit variation



- Yo
- ▲ 7 to 1 dec, 4 to 1 dec for half motifs at sides
- ◻ K on RS, p on WS
- No stitch

ERNEI YARNS

THE MAIL-ORDER SOURCE FOR
YARNS AND KITS FROM
Classic Elite, Tiber
and Dale of Norway



**Classic Elite's World Knits
Kits** *New for Fall 1994!
*Tea Cozies, \$39 *Scarves
& Wraps \$39, *Knitted
Knapsacks & Bags - 6
styles \$39, *Vivaciously

Vibrant Vests

Child \$39/Adult \$54
Also in the World Knits
Collection!

**Socks, Gloves, Ch'ulla,
Mittens, Moccasins,**

Mukluks, Fedoras - \$39

Eclectic Ethnic Dolls \$45

Christmas Stockings \$25

Leather Slipper Sock

Bottoms \$10 Baby's;

\$12 for Child to Men's XL

Classic Elite Editorials:

Deborah Newton's

Cabled & Lace Pullover

in Stonington -- \$96

Nicky Epstein's

Victorian Doll -- \$27.65

Nicky Epstein's

Victorian Bag \$100

(Prices given for Size Small)

WE ALSO CARRY A LARGE STOCK OF
OTHER HIGH QUALITY SPECIALTY YARNS!

Call (800) 343-4874

Visa / MasterCard / Amex

Ernel Yarns

1419 Burlingame • Burlingame, CA 94010

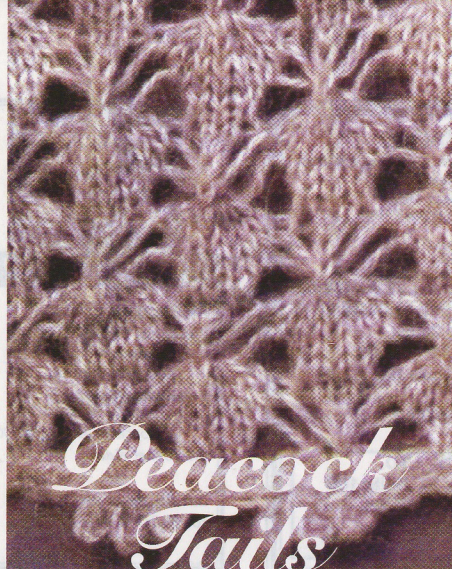
★ Stargoddess ★ ★ Creations ★ ★

features yarns, yarns and more
YARNS by mail

- * Exquisite hand dyed yarns
- * Wool, mohair, cotton, rayon,
silk, linen & blended yarns
- * Finest name brand yarns
- * Knitting & weaving supplies
and accessories
- * Outstanding service
- * Exceptional prices
- * Send \$10.00 for sample catalog
(refundable on 1st order)
- * Price list free

Stargoddess Creations

16704 Daza Drive - Dept. K
Ramona, CA 92065
1-800-664-YARN
M/C & Visa welcome

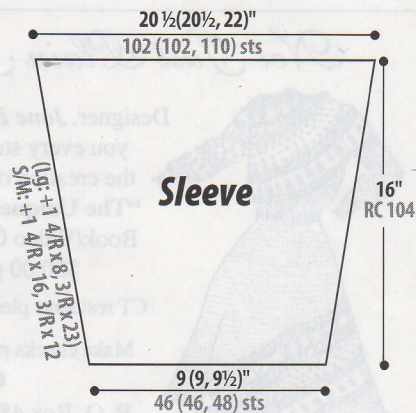
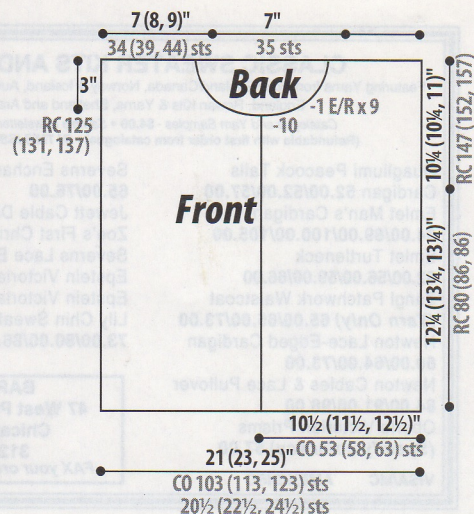


(Continued from p. 51)

(HP) as you transfer the last st. Skip 3
ndls* and rep *to* across the bed. Bring
the empty first and 7th ndls in each rep
back into working position (WP). Set the
carriage to (K) all ndls (Russel Levers II). K
Row 1. Bring the empty 2nd and 6th ndls
in each rep back into WP then K Row 2.
Bring the rem empty 3rd and 5th ndls to
WP and K Rows 3, 4, and 5. The next shaded
row of chart is another setup (non-knit-
ted) row, with the placement alternated.
The peacock tails in this rep are centered
above the 3 plain sts in the last rep. Because
5 rows are worked between transfers, this is
a very fast pat st. **2.** Important note: The
first row of each *Peacock tails* rep requires a
firm, steady push of the carriage, but you
should never force a carriage to K. If your
machine resists, K the first row of each rep
with 7 sts on one ndl, set the carriage to HP
(Russel Levers I), K the first row and then
manually K ea of the ndls holding 7 sts
back to WP by hand. You will also have to
use this method when holding sts to shape
Front neckline. **3.** Crochet trim: Fold back
the waste knitting and work one row of
single crochet, then one row of single cro-
chet with triple picots at the base of each
peacock tail. On R front edge, make the
center picots large enough for buttonholes.
Sleeves can be finished with crochet edging
or narrow rib bands.

Back. With waste yarn, CO 103 (113, 123)
sts and knit several rows. Change to main
yarn and set RC000. Knit 2 rows plain
before beginning *Peacock tails* pat. At
RC80 (86, 86) hang a yarn tag at each edge
to mark armhole. Continue in pat to
RC147 (152, 157). Separately scrap off
(SO) 34 (39, 44) sts for each shoulder and
35 sts for center back neck.

Fronts. Knit two in reverse. With waste
yarn, CO 53 (58, 63) sts. Knit some rows,
ending with carriage on the R. Change to
main yarn. Knit 2 plain rows then begin
pat by starting half rep at R (center front)
edge. Knit, tagging L edge for armhole at
RC 80 (86, 86). At RC125 (131, 137), with



carriage on L, beg shaping neckline. Set
carriage to HP (Russel Levers I). See *Note 2*
for working pat with ndls in HP. Hold 10
ndls at R edge. Knit 1 row to R, wrap yarn
around first ndl in HP and K to L. Then
hold 1 ndl at R edge this and E row 8x.
When there are 19 ndls in HP continue
knitting straight in pat to RC147 (152,
157). SO rem 34 (39, 44) shoulder sts.

Sleeves. With waste yarn, CO 46 (46, 48)
sts. Knit some rows and change to main
yarn. Knit 2 plain rows then beg pat. Knit
pat to RC104 (all sizes) inc at ea side as fol-
lows: For S/M inc 1 st E 4 rows 16x, then E 3
rows 12x. For L inc 1 st E 4 rows 8x, then E 3
rows 23x. At RC104 SO all 102 (102, 110) sts.
Finishing. Fold back waste knit and join
both shoulder seams with chain crochet.
Fold back waste knit and join sleeves to
garment between yarn tags. Sew side and
sleeve seams; if you opt to use handknit
rib bands on the sleeves, knit these before
sewing sleeve seams. Begin at one side
seam and work 2 rows of crochet trim (see
Note 3) around lower edges, front edges,
and neckline of garment, making approx
6-8 sts at straight edges of neckline. If you
did not rib, work trim around sleeve
edges. Remove all waste knit. Wash and
block sweater to size. Sew buttons on L
Front edge. ◊

*Susan Guagliumi is the Education Director
for Studio by White Knitting Machines. She
usually brings sunshine to Hawaii.*