

Raspberry Twist



This bright twisted stitch pullover is accented with cables, popcorns and hand-worked garter stitch inside the diamonds. The Duffey cabled edging provides the perfect finish for neckline and rib stitches.

Machine

LK150 (Note: The ribbing was knitted on the SK840, standard gauge machine.)

Yarn

16 (18, 20) oz 3-ply sport weight wool.

Stitch Size

5 or to get gauge.

Gauge

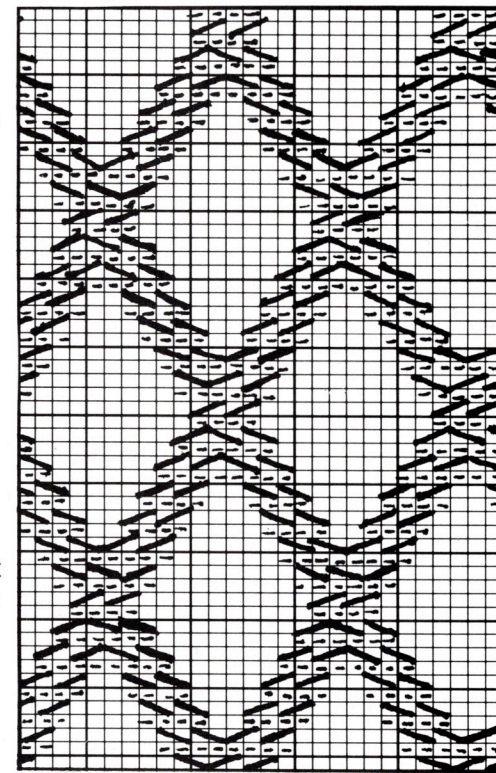
In twisted stitch pattern, 5.75 sts/7.5
Rs = 1"

Size

Finished bust measurement 40"(44") to fit actual bust 38"(42").

PATTERNING NOTES: To twist stitches, remove two stitches on a 2-prong transfer tool. Insert a second tool from above so that the prongs are pointing towards you, then remove the first tool. Twist the tool 180° and place the stitches on the same needles they were removed from. The direction of the twist is extremely important: When a design slants to the right, you must twist the tool towards the right. When the design slants towards the left, twist to the left. Otherwise, the raised effect will appear on the purl side of the fabric, leaving a "ghost" effect on the knit side. This particular twisted stitch design features a double trellis pattern that is especially dependent on the

direction of the twists to create a woven effect where the diamonds meet. The lines that make up the trellis are parallel twisted stitches that work independently of each other. The symbols (\) and (/) on the chart show two stitches twisting either to the left or right, respectively. Please note that I have used these symbols, rather than the standard twisted stitch symbol, to more clearly indicate the direction of each and every twist. Stitches are twisted every 2 rows, progressively working one stitch to the right or left as indicated on the chart. The (-) symbol indicates a plain purl stitch as knitted by the carriage. The cable, popcorn, or garter stitch details can be added as desired to embellish the trellis diamonds.



All garment pieces are started with waste knitting, then rehung on a double-bed machine with the ribbing knitted down and bound off with the Duffey cabled edging.

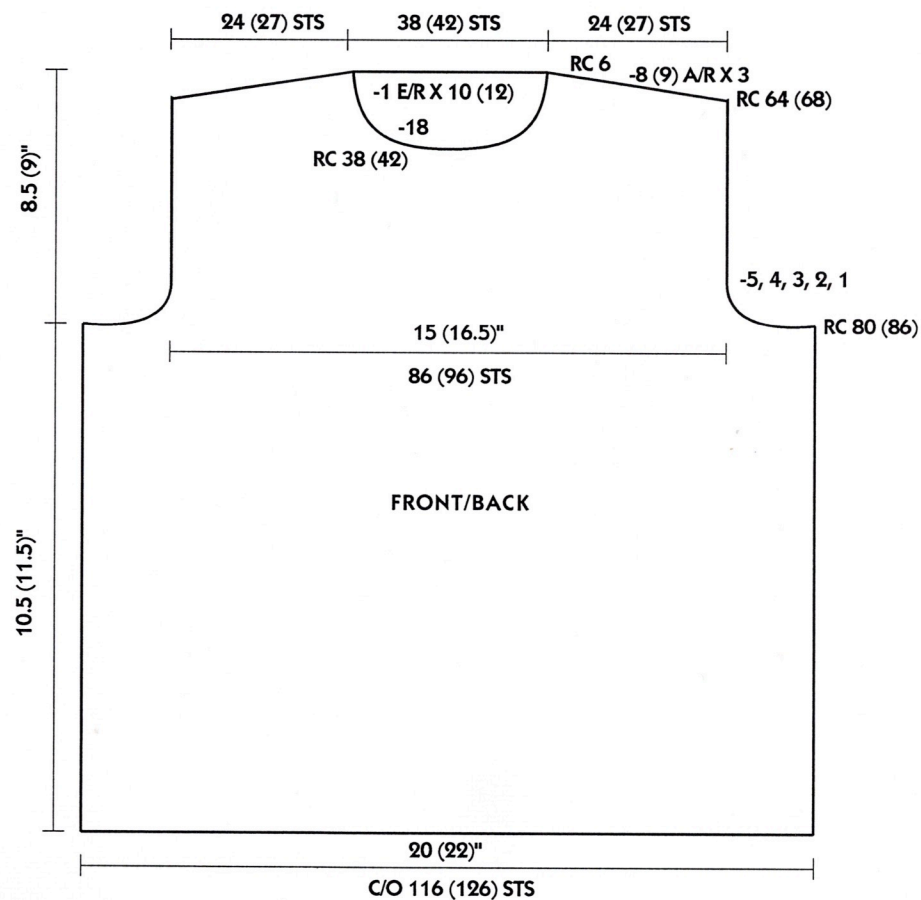
Back

With waste yarn, cast on (c/o) over a width of 116 (126) sts, knit some rows, and change to main yarn. Following twisted stitches pattern chart throughout, knit to RC 80 (86) to begin armhole shaping. Reset RC 000. For both sizes, on the carriage side, bind off (b/o) 5,

4, 3, 2, 1 sts. Knit to RC 64 (68) to shape shoulder slants with partial knitting (short rows). On the side opposite the carriage, hold 8 (9) sts, 3 times. Scrap off the center 38 (42) neck sts, then 24 (27) sts for each shoulder.

Front

Knit same as back to RC 38 (42) above armhole shaping. Hold center 18 neck sts and all needles to the left of them to shape right shoulder. Hold 1 st, every row, 10 (12) times on neck edge.



At RC 64 (68) shape shoulder as for back and then scrap off. Repeat for second side. Before scrapping off neckline stitches, pick up and make stitches along straight edges of the neckline, knit one row with main yarn and then scrap off.

Sleeves

Make two alike. With waste yarn, c/o over a width of 56 (58) sts and knit some rows. Change to main yarn and knit in pattern to RC 106 (116), increasing 1 st, every 7 (6) rows, 15 (19) times. Reset RC 000 and shape sleeve cap by binding on 5 sts at the beginning of the next two rows. Decrease 1

st, every other row, 18 (20) times; then decrease 3 (4) sts, every other row, 3 times. Bind off the remaining 22 sts.

Finishing

With right side facing you, rehang each garment piece on a double-bed machine to knit 2" of ribbing. Transfer all stitches to main bed and b/o using the Duffey cabled edging. Join one shoulder seam. With right side of garment facing you, hang entire neck edge on the machine to knit Duffey edging. Join second shoulder seam. Complete side and sleeve seams, then join sleeves to garment. Wash and block to size.

