

STUDIO BY WHITE

fall / winter 1993

\$8.50

This pattern originally appeared in Studio by White Design Magazine and is reproduced here with the kind permission of Terri Burns.

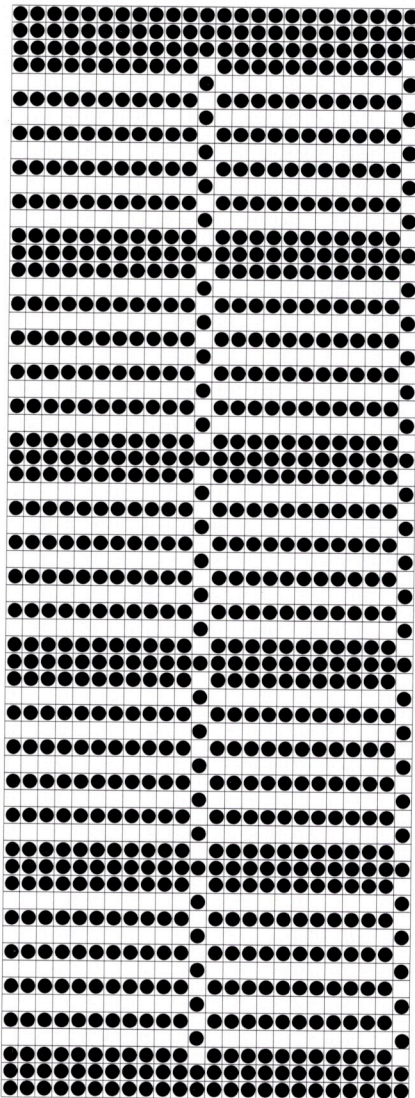


Studio
by **WHITE**

Terri Burns

Sequined Evening Jacket

Terri has created see-through pockets with a special double bed quilting technique that uses fine embroidery thread. As she knitted, Terri filled each pocket with a large hologram sequin. What a great look for the holidays!



Punch Card Pattern: 12 row repeat.

Sizes: Small (Medium, Large) to fit actual bust measurement of 34 (36, 38)".

Stitch Size: For the quilting pattern/ main body of garment use SS 3/6 or to get gauge. Sleeves are knitted in long stitch pattern with SS 6/5 or to get gauge. Bands at SS 8. Model garment was knit on the SK840.

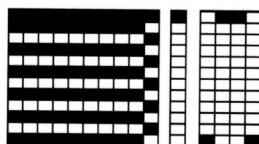
Gauge: Quilting pattern: 35 STS/91 Rs = 10 cm (8.75 STS/22.75 Rs = 1"). Long stitch pattern: 34 STS/64 Rs = 10 cm (8.5 STS/16 Rs = 1"). Bands: 22 STS/46 Rs = 10 cm (5.5 STS/11.5 Rs = 1") measured with fabric stretched slightly sideways.

Machine: SK840 (SK580, 280, 700) 4.5-mm standard gauge machine, punch card or electronic.

Accessories: SRP 60-N Ribber with YC-6 yarn changer; garter bar optional but helpful.

Materials: Yarn Country "Designer 727", 80% wool/20% rayon dress yarn, with approx. 2200 yd/lb, 1 cone (approximately 1.2 lb) Black for MC. Rayon machine embroidery thread, 3 cones (500 yd/cone) for CC. Jones Tones 20-mm Hologram discs (SJ 19), 2 containers. (The sequin discs can be ordered from Knitting and Sew Forth, 10890 S.W. Polsky Road, Beaverton, Oregon 97005 for \$14 including shipping.) 4 yd black sequin trim with large enough loops to hang onto the NDLS. Shoulder pads (optional).

Pattern Notes: Ribber must be set to K 2 Rs, then slip 2 Rs. Use the driving cam and beg with auto-set lever (0), set levers (1). *Quilting pattern for electronic machines:* N1 cam at L5, point cams at edges of knitting. With COL and inspection light on, insert card to R 1, push button #3 (elongation), then turn off inspection light. Set SS 3/6 and MB carr to S-J to beg pat. *K 2 Rs CC, 2 Rs MC for 22 Rs, changing color whenever COL. Insert a sequin disc into each full pocket formed across the bed then K 2 Rs across all NDLS with MC.** Rep * to **. *Quilting pattern for punch card machines:* Insert card and lock on R 1 before C/O. To start pat, with COL release card, S/L knob to L for elongation, set SS 3/6 and MB carr to slip. Repeat * to ** as above. Note: If a full pocket is not formed on the edges, do not insert a sequin. The auto-set lever on the ribber carr should always be (1) when knitting with MC, (0) with CC. *Long stitch pattern for sleeves:* For electronic K/M, set MB carr to C (circular). For punch card K/M, set MB carr to slip, RT side lever forward, L side lever back. For all K/M, ribber set to K every R. Incs and decs are written counting MB NDLS only but should be done on both beds.



Electronic Stitch Pattern: 10 STS/12 Rs.

Knitting Directions

C/O for all garment pieces: With beds in half pitch (H-5), bring required number of NDLS on MB and corresponding NDLS on RB into WP for FNR. With MC, COL and SS 0/0, K zigzag R. Hang comb and weights. Change SS to 2/2, K 2 circular Rs, SS 3/3 and K 1 R both beds, ending COL. C/O complete.

Back: C/O 166 (176,192) STS. RC 000. COL. With SS 5/5, K circular for 16 Rs then K 2 Rs across both beds, ending COL.

Insert driving cam at L end of RB and make sure auto-set lever on ribber carr is at (0) and Set Levers are both on (1). Start pat with CC and K to RC 182. *Armhole decs:* B/O 6 STS at the beg of the next 2 Rs. Dec 1 ST A/R twice, every 4th R 6 times, every 6th R 4 times. Cont straight to RC 376. *Shoulder:* On each side, B/O every 4 Rs as fol. Small: 4 STS 3 times, then 3 STS 9 times. Medium: 4 STS 8 times, then 3 STS 4 times. Large: 5 STS 4 times, then 4 STS 8 times. At RC 420, S/O rem 52 STS.

Front: Knit 2 in reverse. C/O 79 (84,92) STS, ending COL. RC 000. With SS 5/5, K circular for 16 Rs, then K 2 Rs both beds. With COL, insert driving cam at L of RB and make sure auto-set lever on ribber carr is at (0) and set levers are both on (1). With CC start pat and K, dec 1 ST every 20 Rs, 18 times at center front edge. At RC 182 beg *armhole decreases:* B/O 8 STS. Dec 1 ST A/R 4 times, every 4th R 6 times, every 6th R 4 times. Cont K to RC 376 (377) to beg shaping *shoulder* same as for back. Rep in reverse for second front.

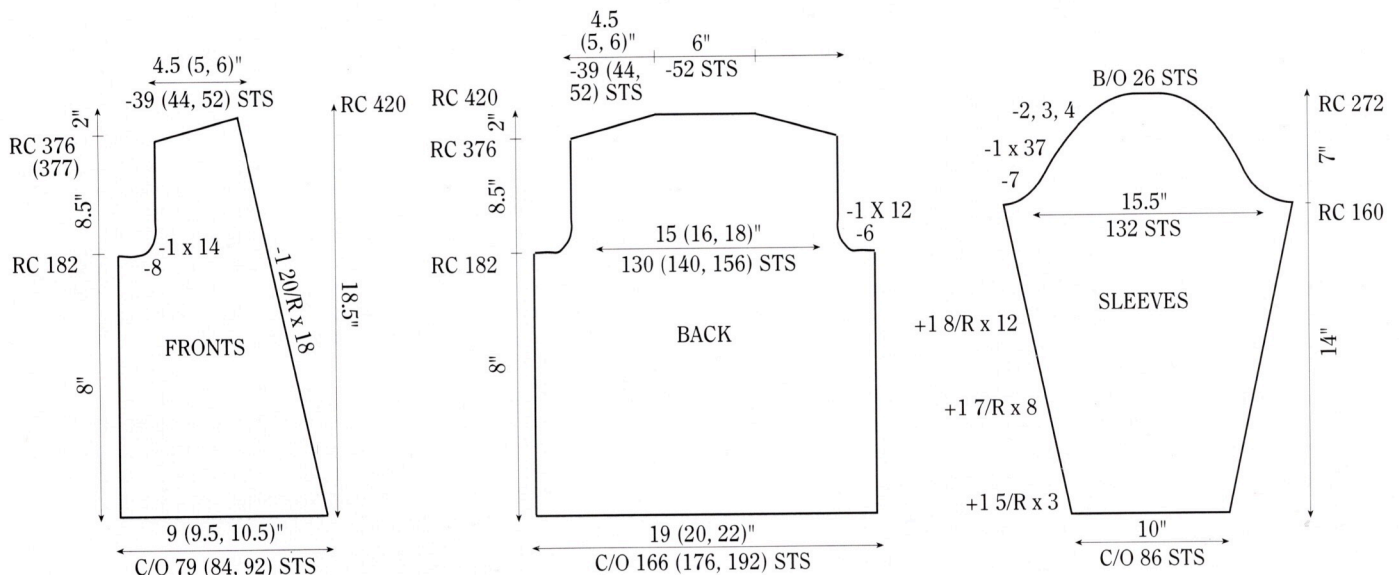
Sleeves: Knit 2 alike. C/O 86 STS. RC 000. With SS 5/5, K circular for 16 Rs then K 2 Rs across both beds. Set main carr for long stitch. K 16 Rs, inc 1 ST each side every 5 Rs, 3 times. K 3 repeats of quilting pattern then reset RC 000 and cont in long stitch. On each side, inc 1 ST every 7th R 8 times, every 8th R 12 times to 132 STS. At RC 160 *shape sleeve cap.* B/O 7 STS at the beg of the next 2 Rs. On each side, dec 1 ST every A/R 7 times, 4th R 7 times, 3rd R 16 times, A/R 7 times. A/R at each side B/O 2,3, 4 STS. At RC 272 B/O the rem 26 STS. Rep for second sleeve.

Finishing Directions

Do not block or steam front or back because the sequins melt and distort. Lightly steam upper sleeve, avoiding quilting pattern. Stitch shoulder and side seams.

Bands/General Directions: With scrap and ravel C/O required number of STS. Insert CC into plaiting feeder, MC into main yarn feeder. With SS 8, K 20 Rs. Remove on garter bar (or S/O). With RT side facing you, hang garment edge onto the same NDLS used for band, with about 1/4" of fabric extending above the NDLS. With RT side facing you hang the sequin trim onto every 3rd or 4th NDL. Turn the garter bar over and rehang the STS into the *hooks* of the NDLS so that the knit side of band is facing you. Close latches and pull band STS through trim and garment. Hang a hem from the R above the ravel cord. Pull out ravel cord. Latch tool B/O. *Specific bands:* 56 STS required for sleeve bands, 50 (52, 58) STS for lower front edges, 104 (110,120) STS for lower back edge, 104 STS for front neck edges, and 34 STS for back neck. Complete sleeve bands as described

above. When working with the garment, start with the lower left front edge. Rather than cutting the sequin trim, allow it to cont from one section to the next, all the way around the garment. When hanging the front neck edge, hang the end of the bottom band onto 5 edge NDLS and do not place the sequin trim on those NDLS. Re-hang back neck STS from the scrap yarn, dec 18 STS evenly across. When bands are completed, sew all band seams. Sew sleeve seam and set in sleeves. Garment may be hand washed and left flat to dry. *Do not* dry clean or use any heat. Try on and sew in shoulder pads if desired.



Studio by White Knitting Machines
11760 Berea Road
Cleveland, Ohio 44111-1601

Address Correction Requested

BULK RATE
U.S. POSTAGE
PAID
NEW HAVEN, CT
PERMIT NO. 1200

