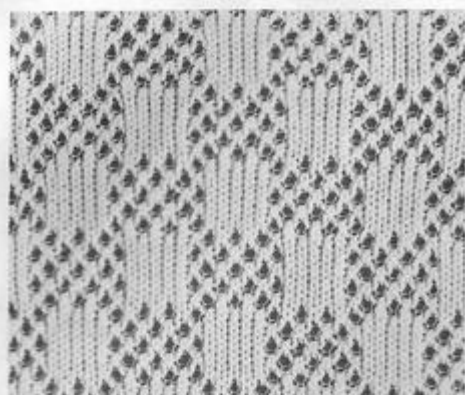


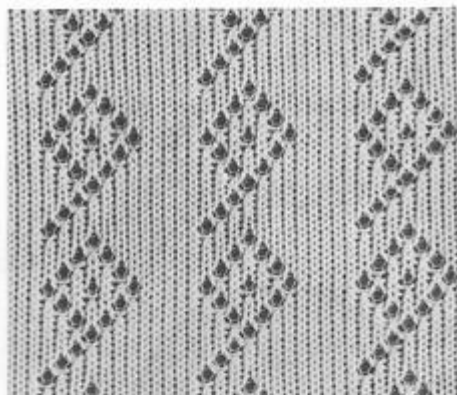
HANDY PUNCH © COPYRIGHT
PATTERN SET M1012

THESE PATTERNS ARE SUITABLE
FOR USE WITH KNITMASTER PUNCHCARD
MACHINES MODELS. 321 323 325.

Empisal
Knitmaster



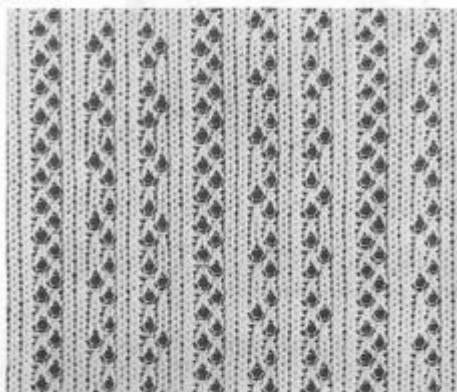
M211



M212



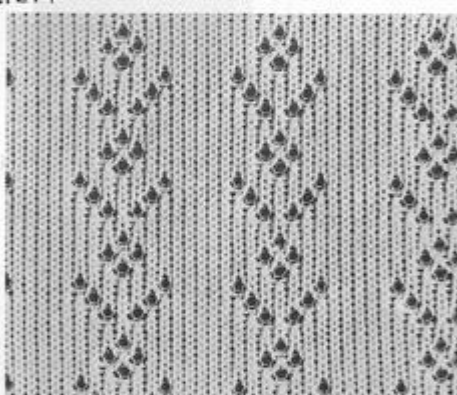
M213



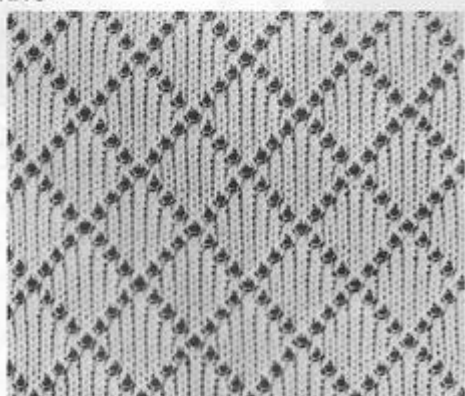
M214



M215



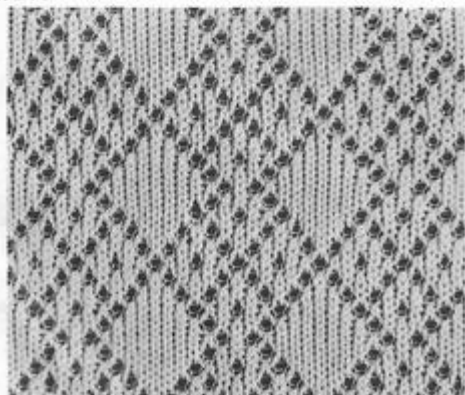
M216



M217



M218



M219

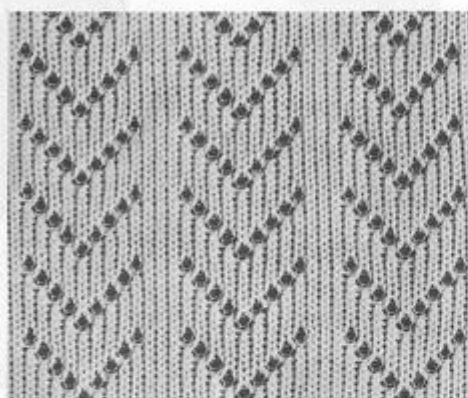


M220

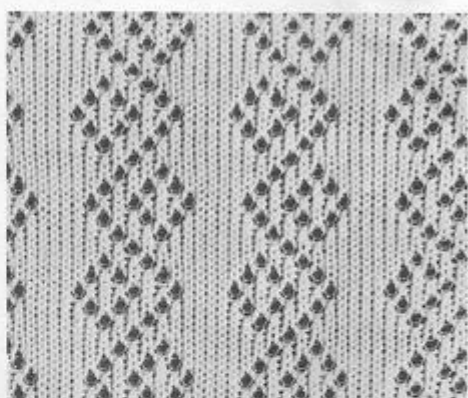
HANDY PUNCH ©COPYRIGHT
PATTERN SET M1012

THESE PATTERNS ARE SUITABLE
FOR USE WITH KNITMASTER PUNCHCARD
MACHINES MODELS 321 323 325.

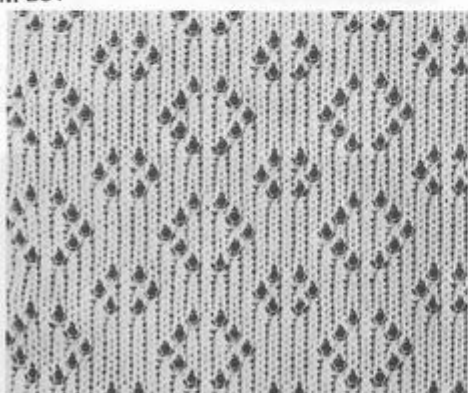
Empisal
Knitmaster



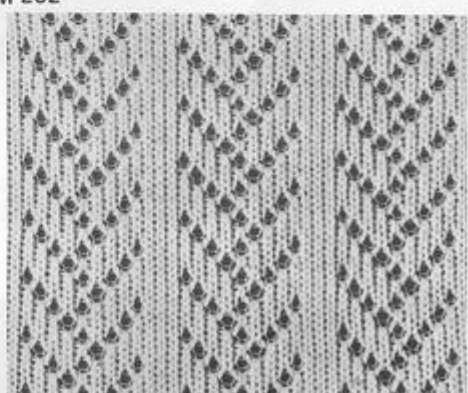
M 201



M 202



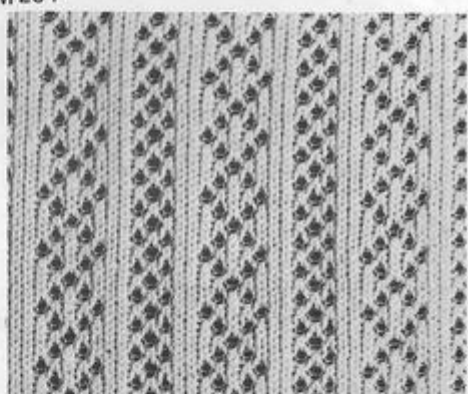
M 203



M 204



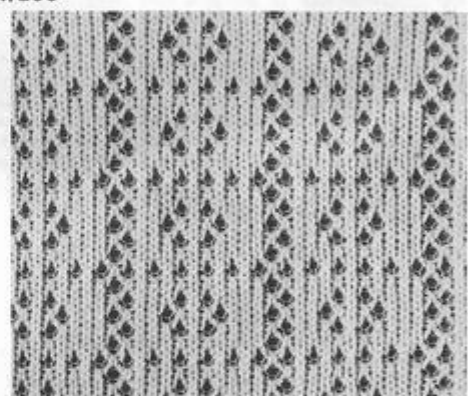
M 205



M 206



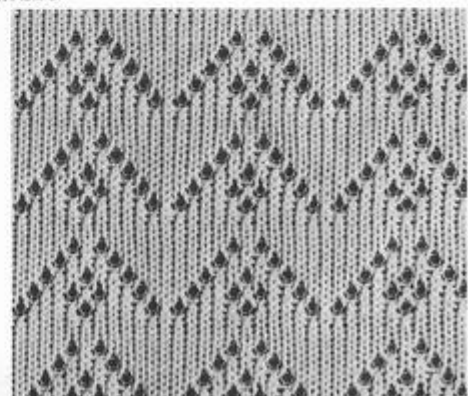
M 207



M 208



M 209



M 210

How to use your Handy Punch ©

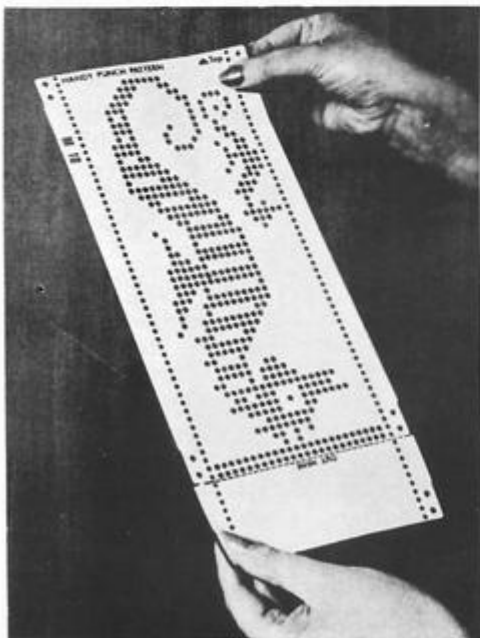
BY
Empirel-Knitmaster

Adding new designs to your punchcard collection the Handy Punch way is fun; you probably can't wait to punch your first design and try it out on your knitting machine. But please, before you do anything, READ THESE INSTRUCTIONS CAREFULLY AND FOLLOW THEM, TAKING YOUR TIME.

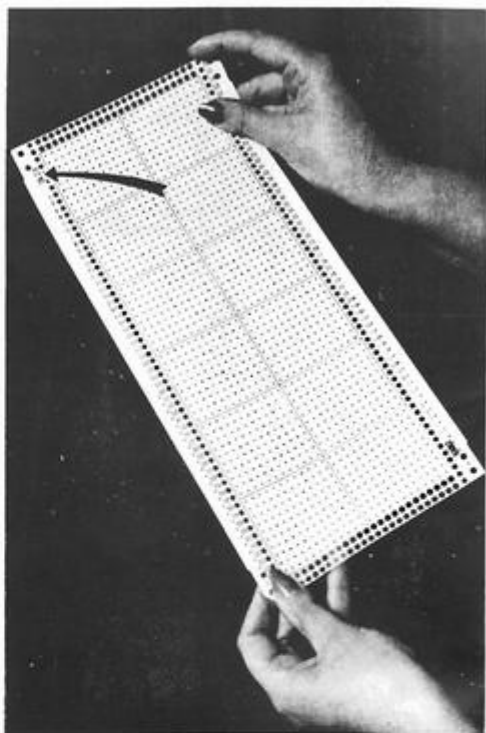


PREPARATION - PUNCH OUT THE GUIDE HOLES.

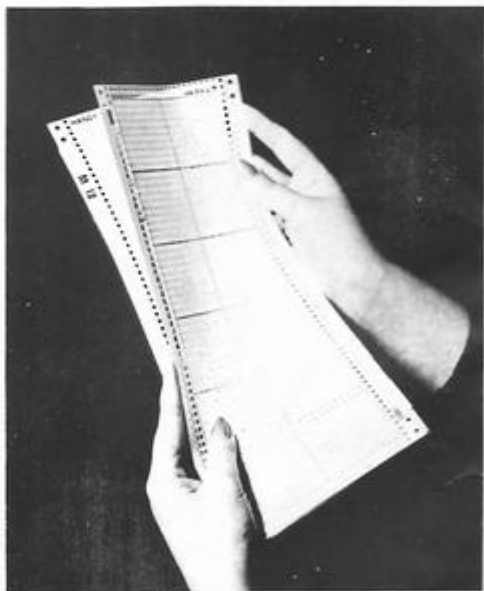
With your Handy Punch, punch out the two guide holes at each corner of the Paper Pattern of your choice. It is important to punch them out accurately.



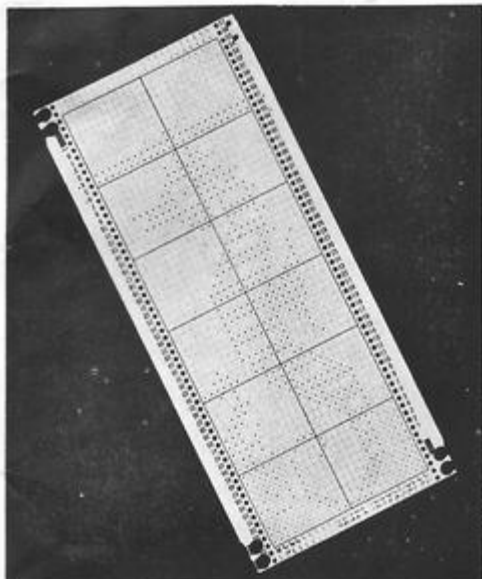
1. Now hold the printed Paper Pattern with ▲ pointing upwards.



2. Take a blank plastic card and hold it, with the figures 321 facing you on the TOP LEFT hand corner.

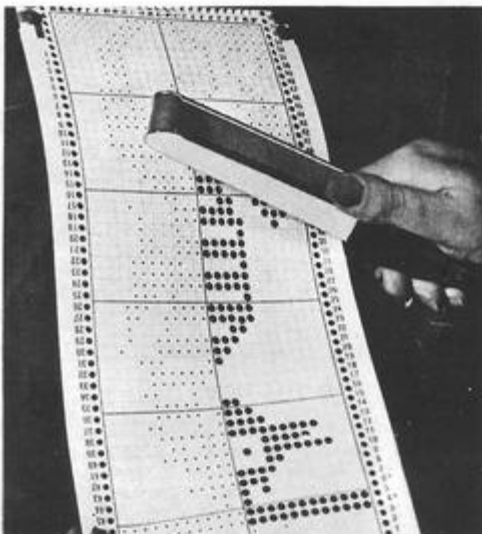


3. Place the printed Paper Pattern BEHIND the blank plastic card and match up the two holes at each corner with those of the blank plastic card.



4. Attach the Paper Pattern to the back of the blank plastic card at all 4 corners with the plastic clips provided.

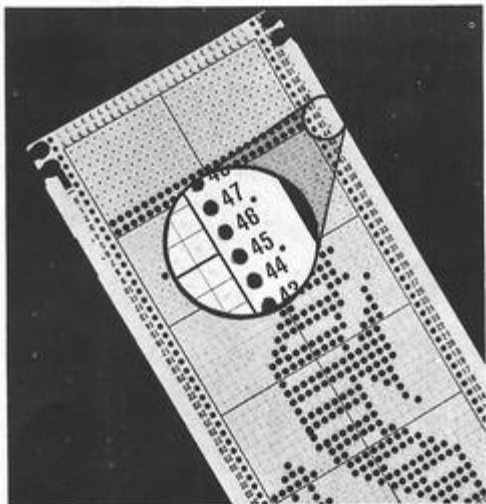
The black dots on the printed Paper Pattern show through the holes of the blank card, and these are the positions you must punch out.



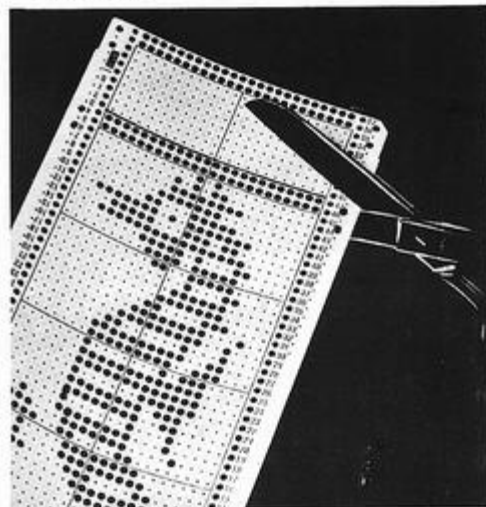
5. The easiest way to punch a card is by holding it sideways as indicated in the picture, starting from the bottom of the pattern. The Handy Punch reaches to the centre of the card only, so when one half of the card is punched, turn the card and punch the second half.

IMPORTANT

When punching, be sure to key the pilot pin of the Handy Punch into the pin size register holes **BEFORE** squeezing the punch – this will ensure that every hole is punched in the correct position.



6. If your Paper Pattern has less than 60 rows, please be sure to punch the 2 new guide holes indicated by the 2 black dots on either side of the pattern. If the pattern is 60 rows deep, there will be no need to cut the plastic card. Just unclip it from the Paper Pattern and it will be ready for use.



7. CUTTING CARD TO LENGTH

If the design is less than 60 rows deep, you will need to cut the plastic card. You will know if the pattern is less than 60 rows deep because there will be no more black dots showing through the card; if this is the case, unclip the Paper Pattern from the back of the plastic card and cut the plastic card just after the **TWO** fully punched rows, following the horizontal red line across the card. (See Picture Above). Shape both corners to match up identically with those you have just cut off.

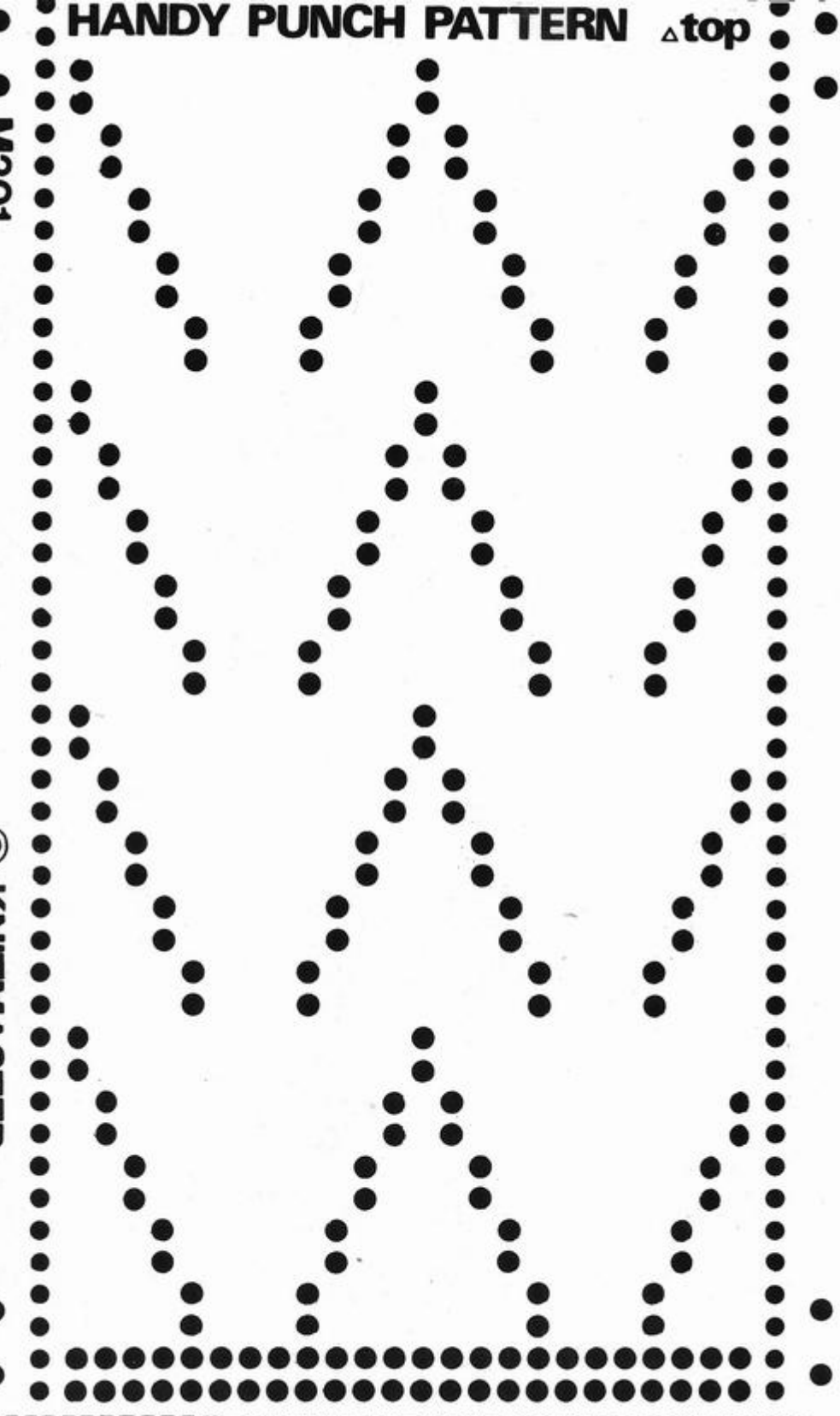
HELPFUL HINT

If you have punched a hole in a wrong position – just put a little piece of sellotape over this position on the reverse side of the card, taking care not to sellotape the correctly punched holes.

HANDY PUNCH PATTERN Δ top

M201

© KNITMASTER

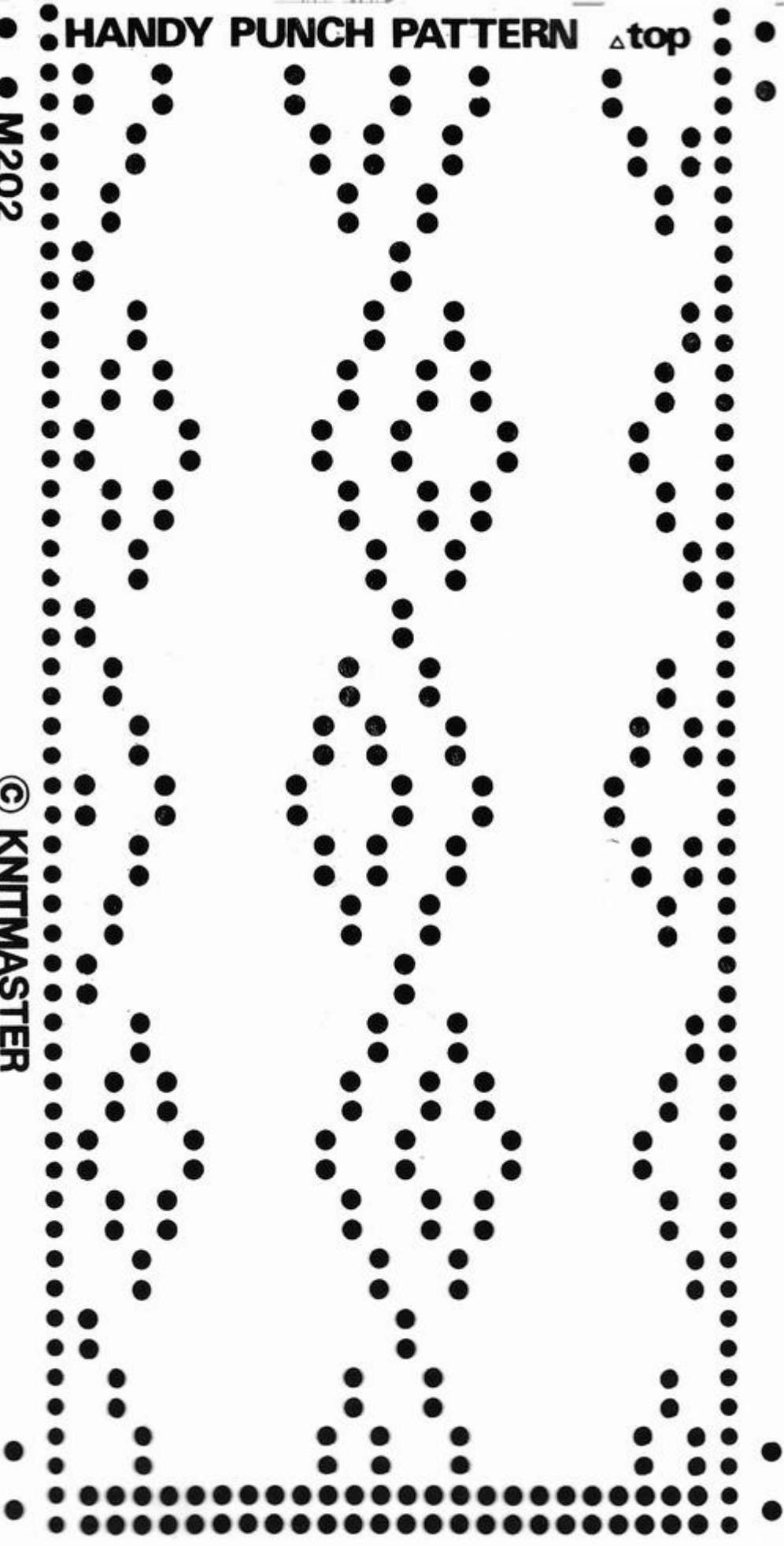


CUT HERE

HANDY PUNCH PATTERN Δ top

M202

© KNITMASTER

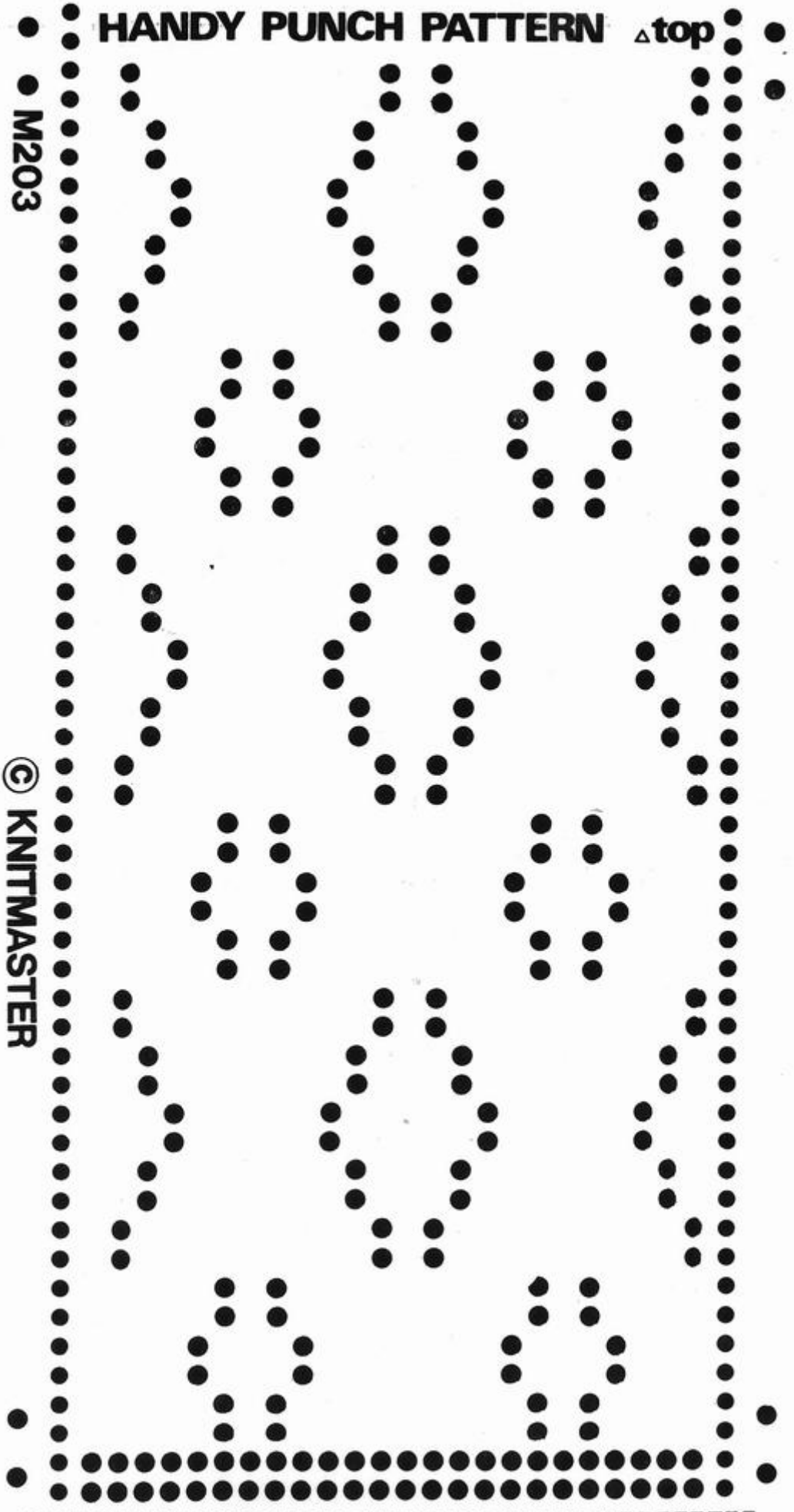


CUT HERE

HANDY PUNCH PATTERN Δ top

M203

© KNITMASTER



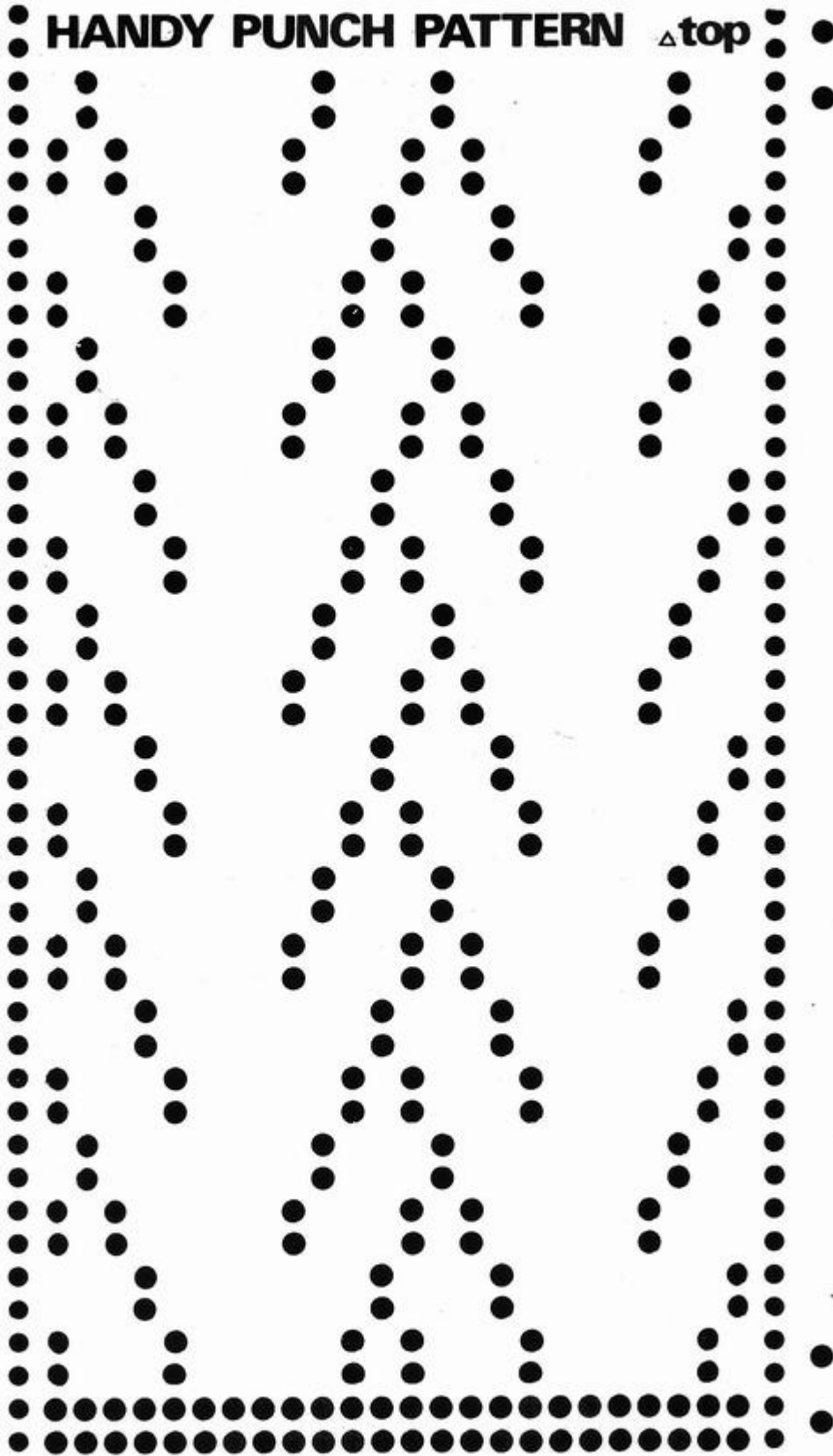
CUT HERE

HANDY PUNCH PATTERN Δ top

M204

© KNITMASTER

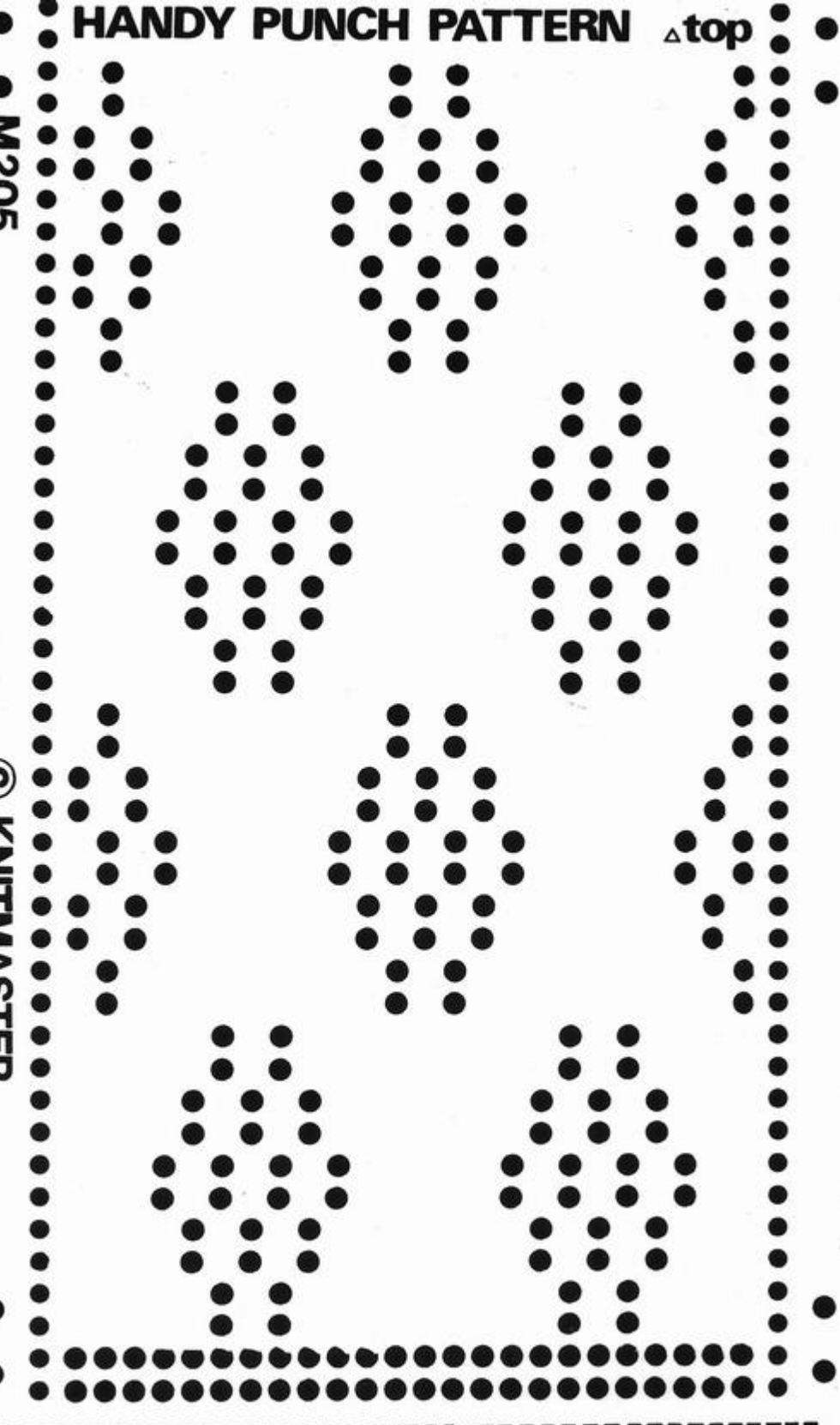
CUT HERE



HANDY PUNCH PATTERN Δ top

M205

© KNITMASTER

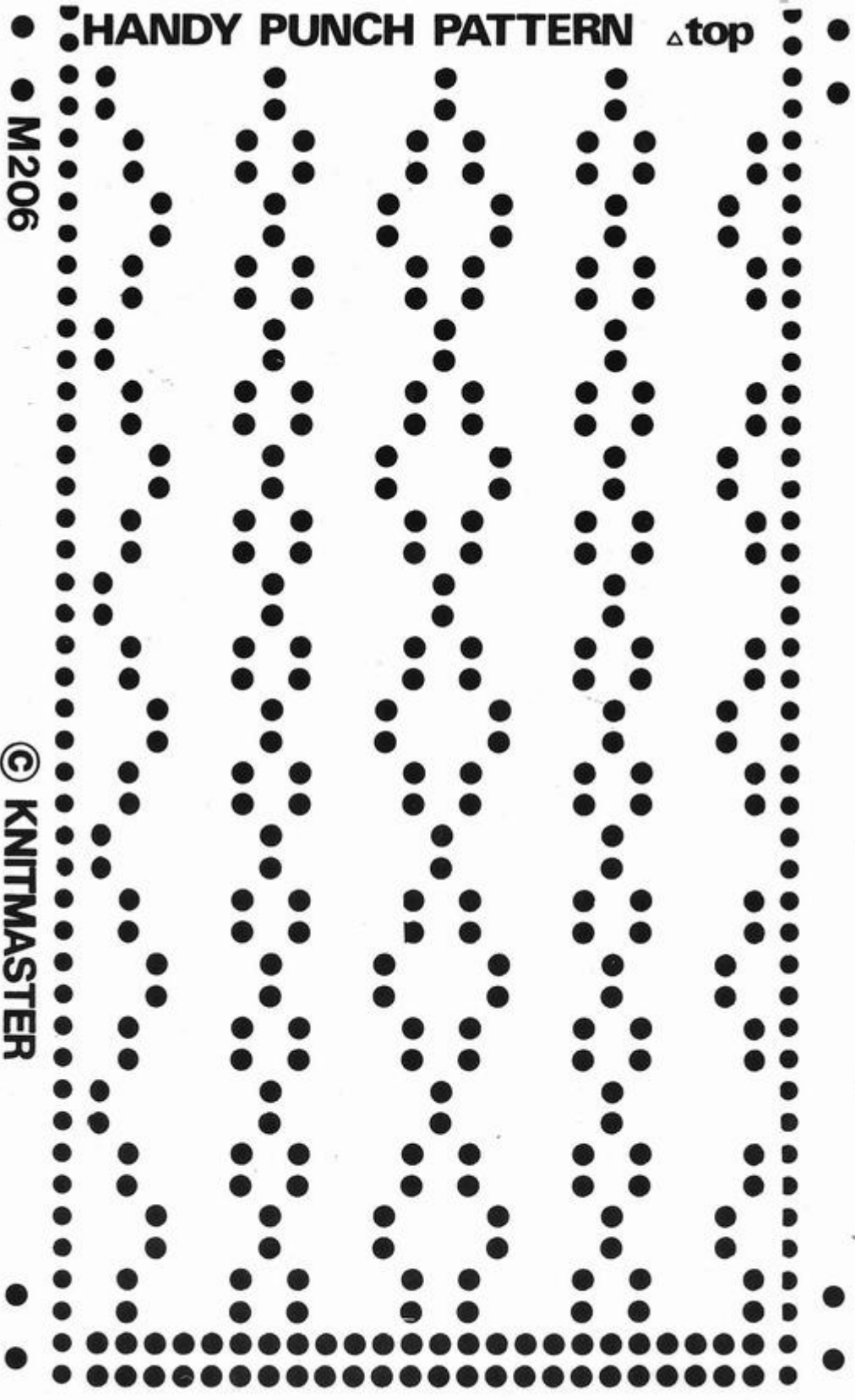


CUT HERE

HANDY PUNCH PATTERN Δ top

M206

© KNITMASTER

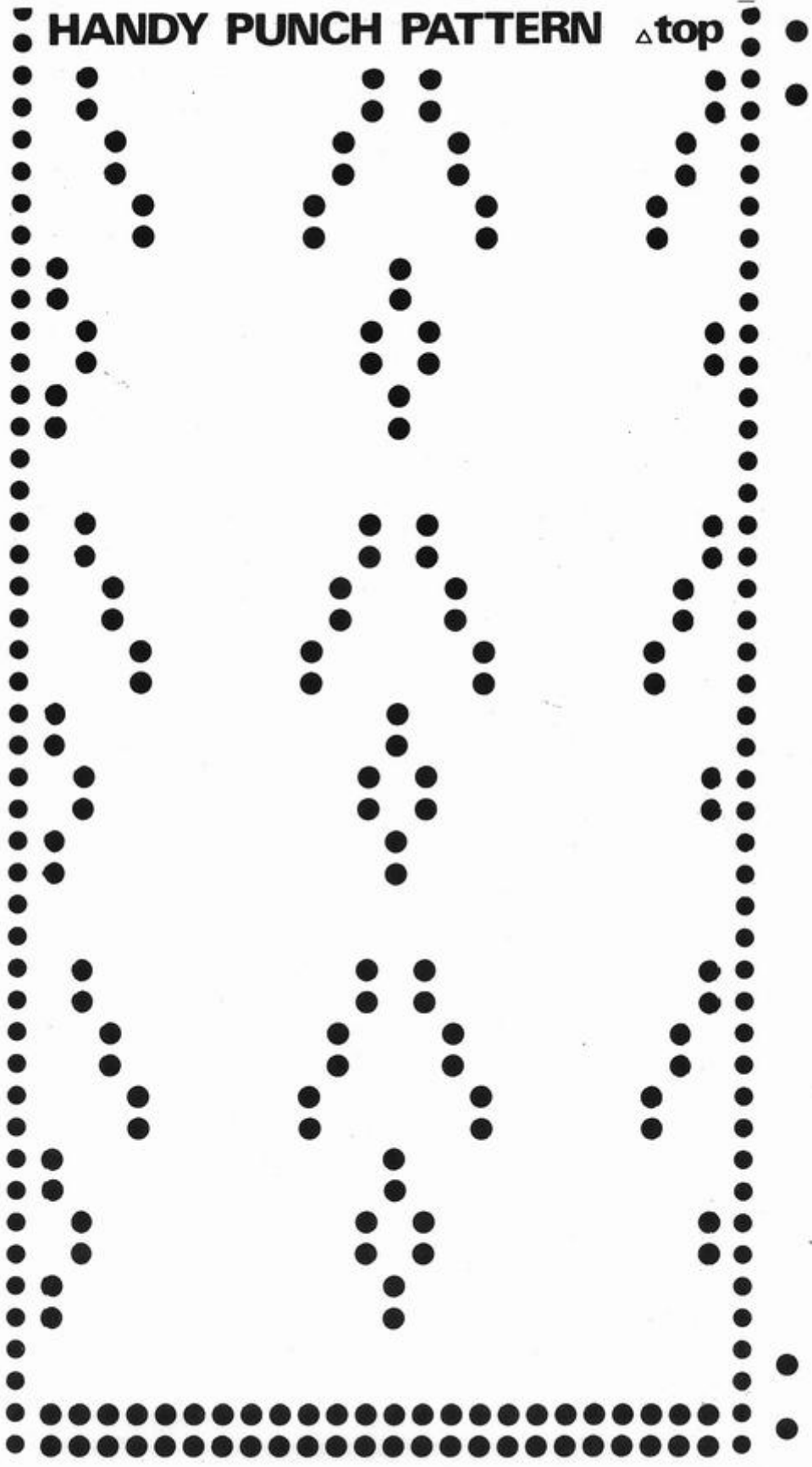


CUT HERE

HANDY PUNCH PATTERN Δ top

M207

© KNITMASTER



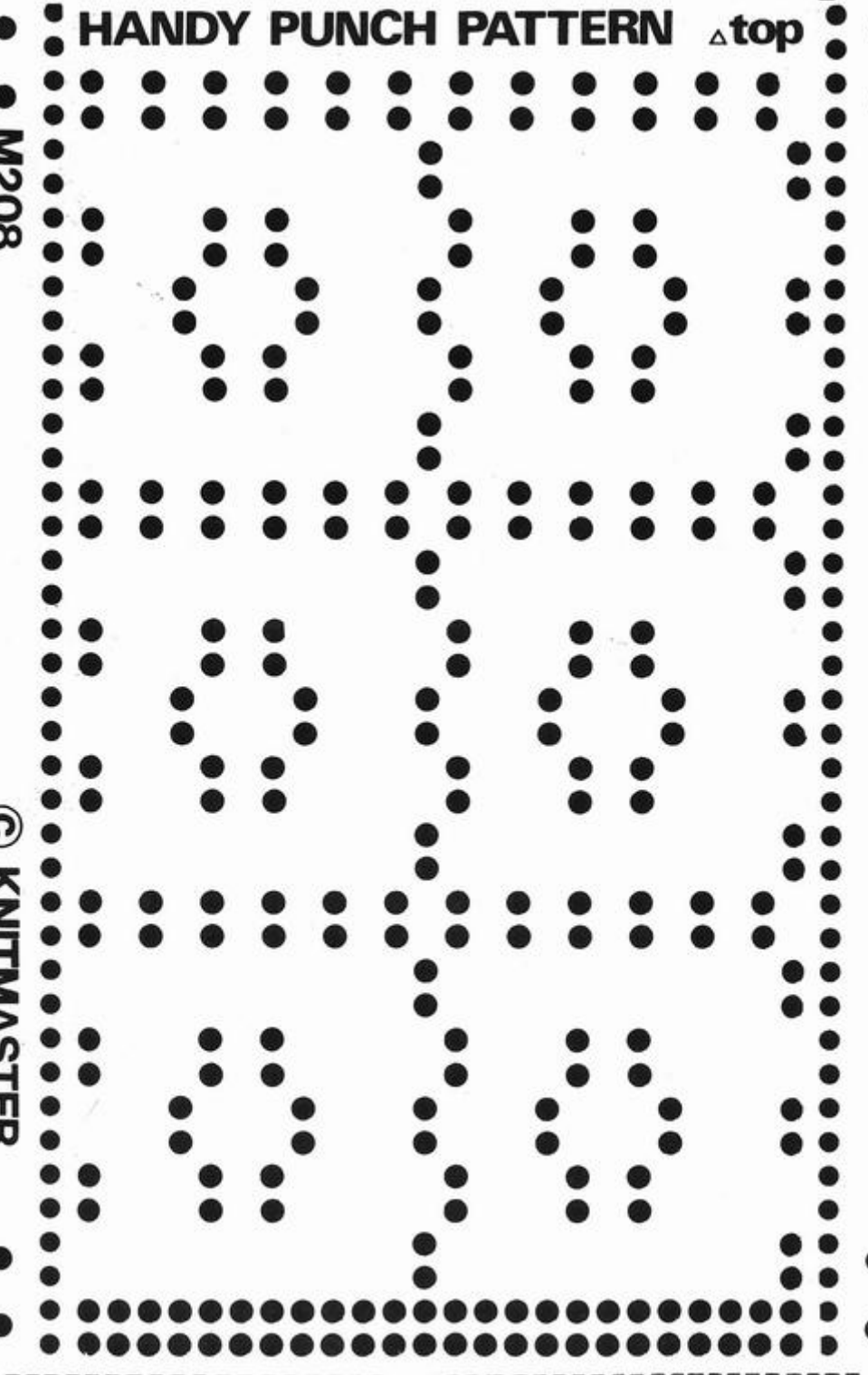
CUT HERE

HANDY PUNCH PATTERN Δ top

M208

© KNITMASTER

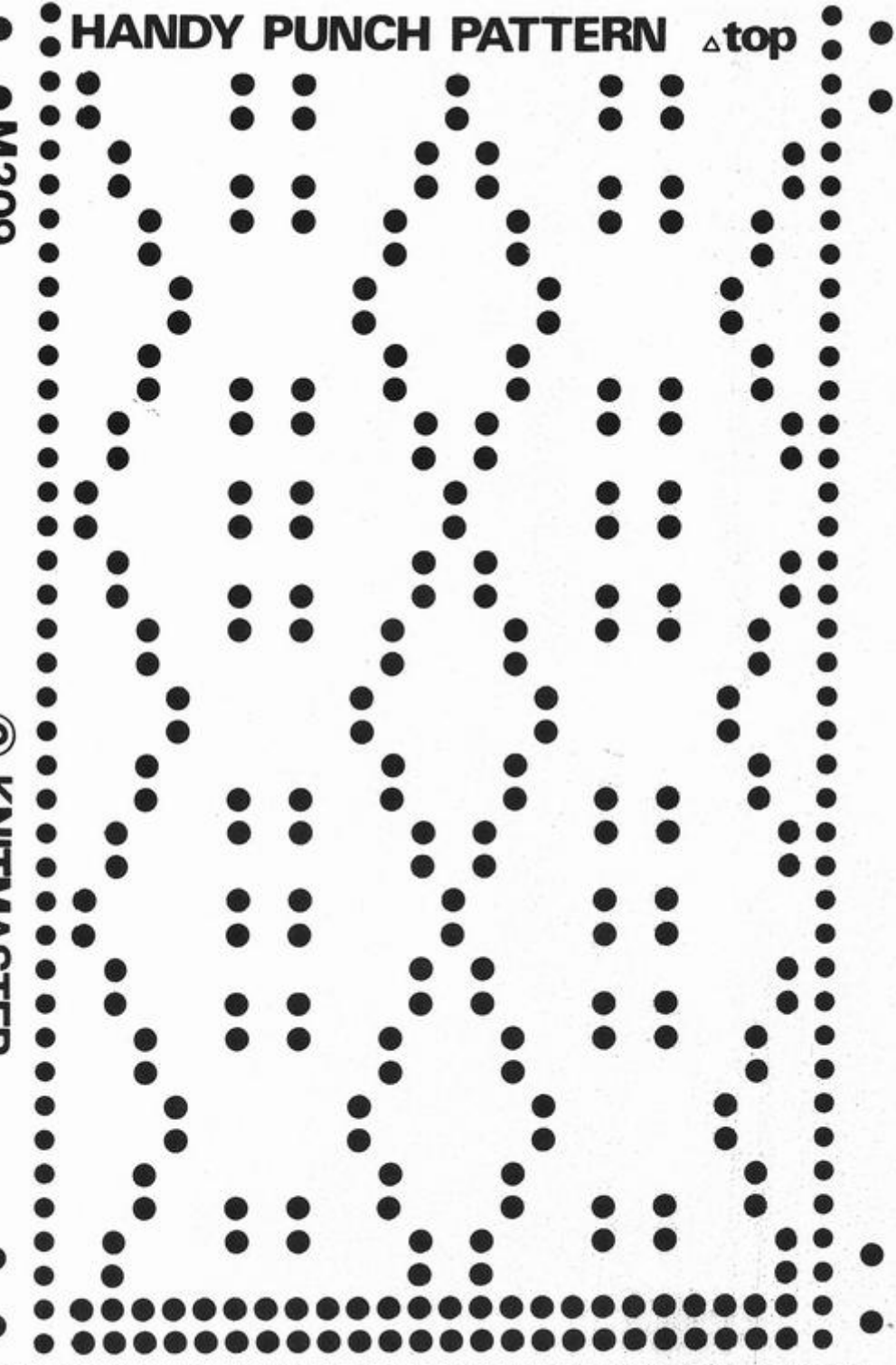
CUT HERE



HANDY PUNCH PATTERN Δ top

M209

© KNITMASTER

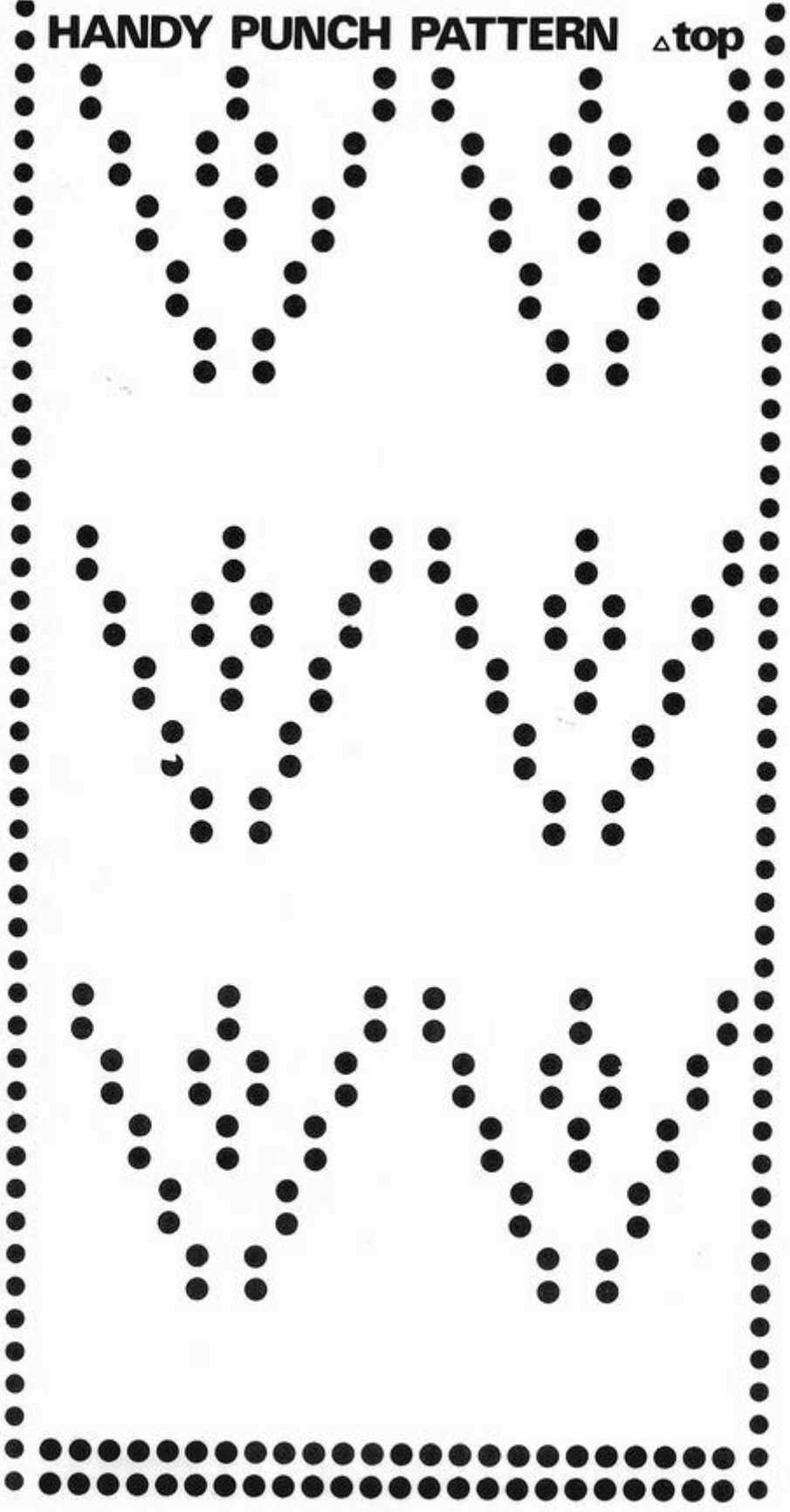


CUT HERE

HANDY PUNCH PATTERN Δ top

M210

© KNITMASTER



CUT HERE

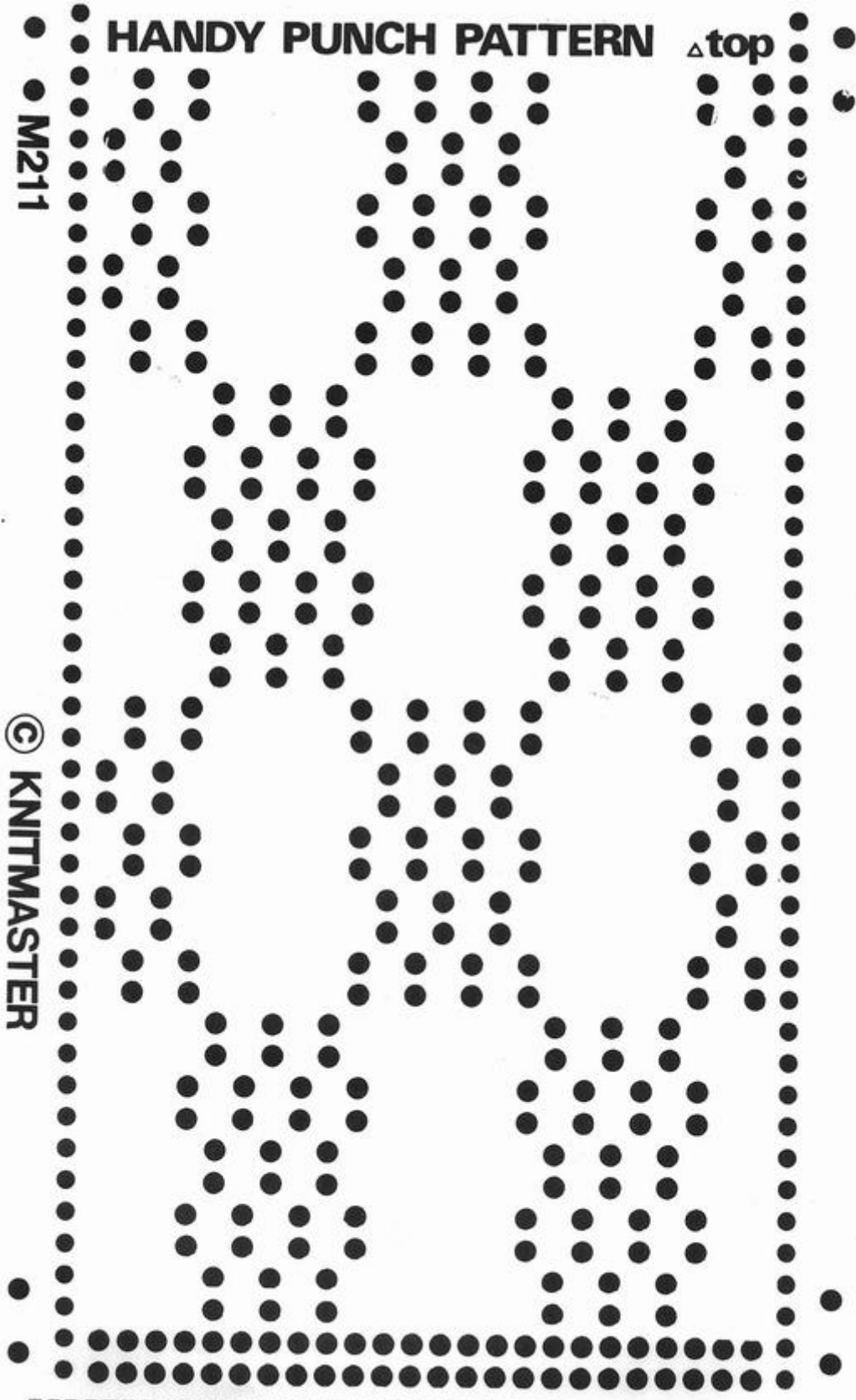
HANDY PUNCH PATTERN

△top

M211

© KNITMASTER

CUT HERE

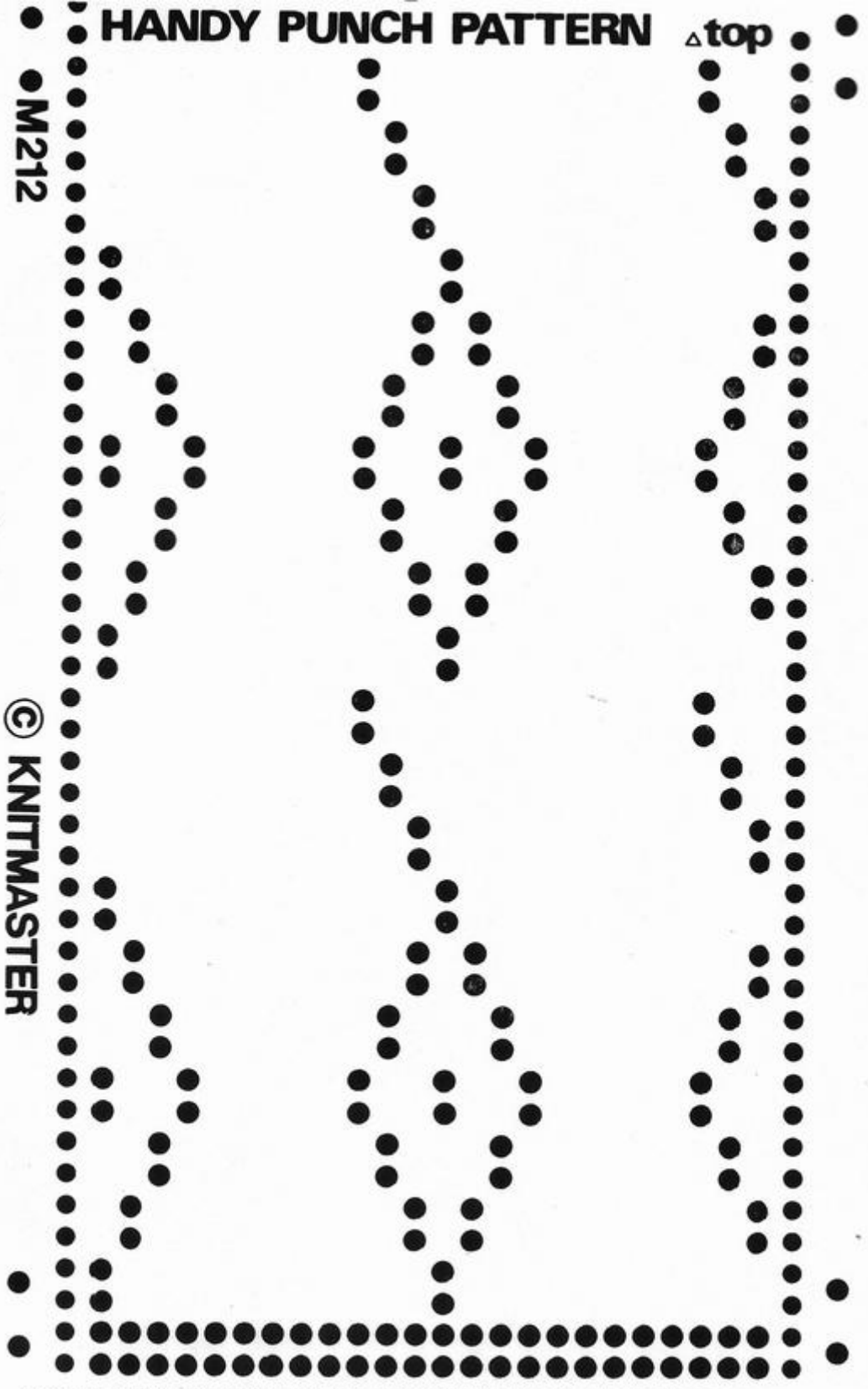


HANDY PUNCH PATTERN

△top

M212

© KNITMASTER

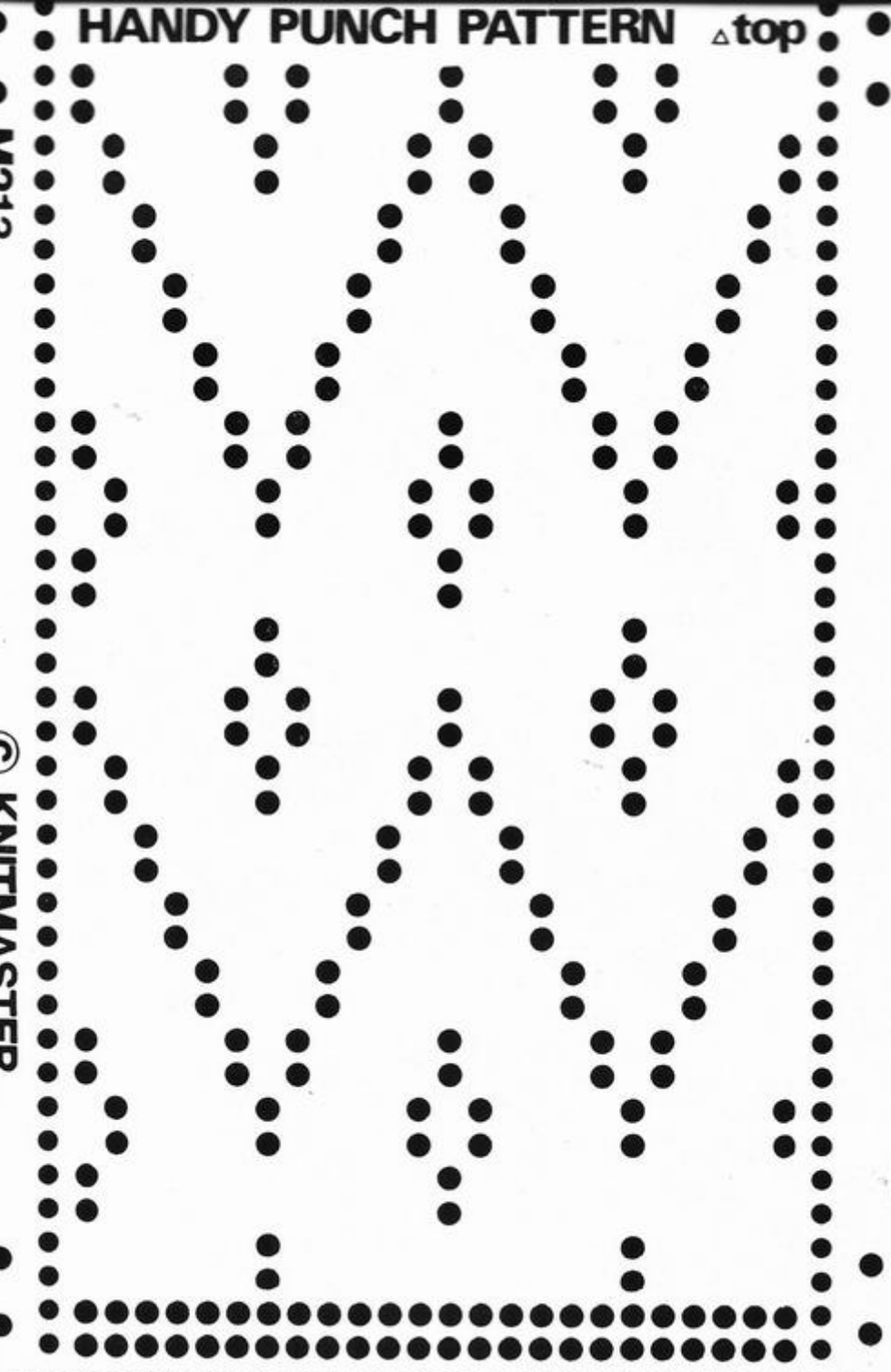


CUT HERE

HANDY PUNCH PATTERN Δ top

M213

© KNITMASTER



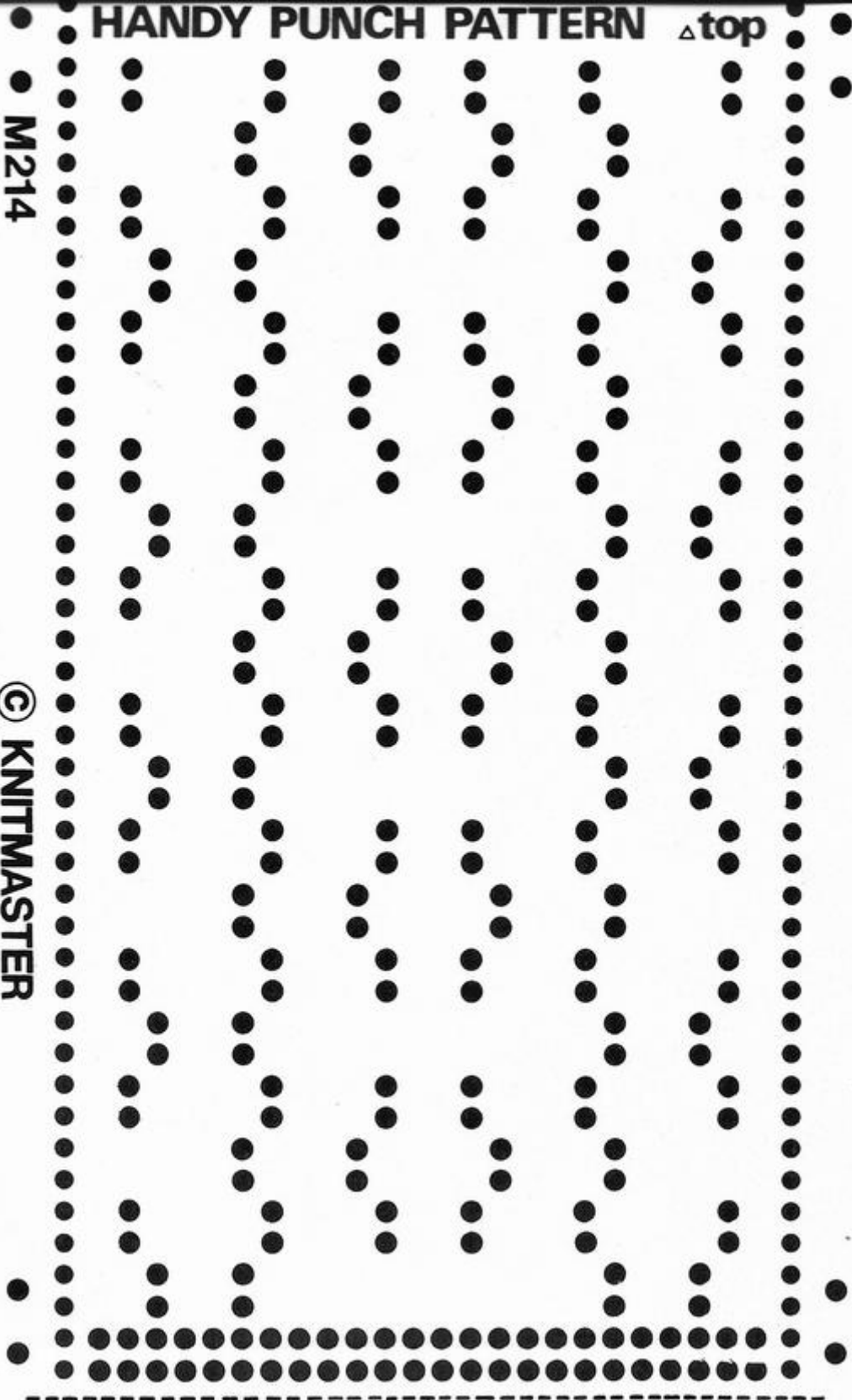
CUT HERE

HANDY PUNCH PATTERN Δ top

M214

© KNITMASTER

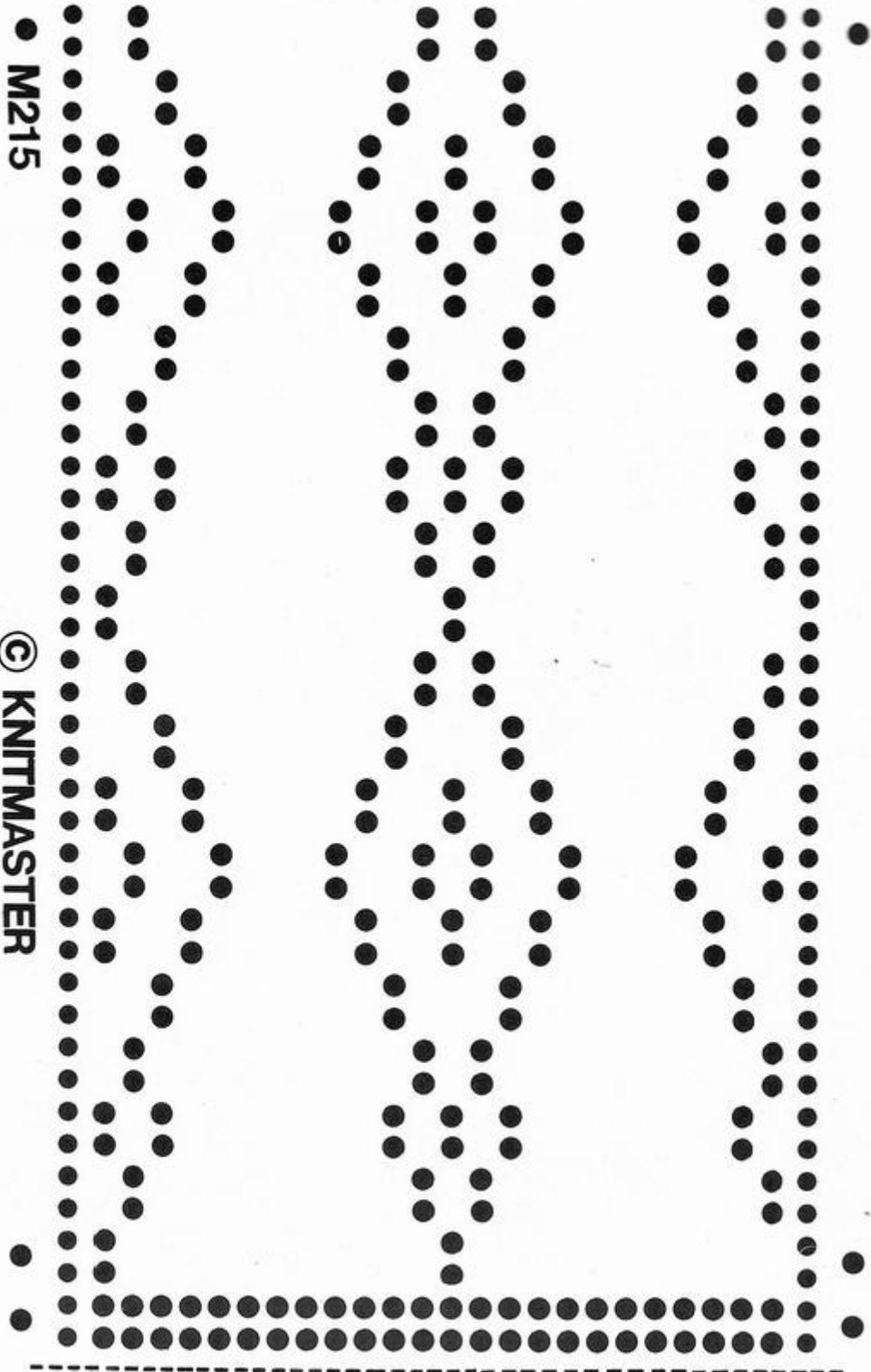
CUT HERE



HANDY PUNCH PATTERN Δ top

M215

© KNITMASTER

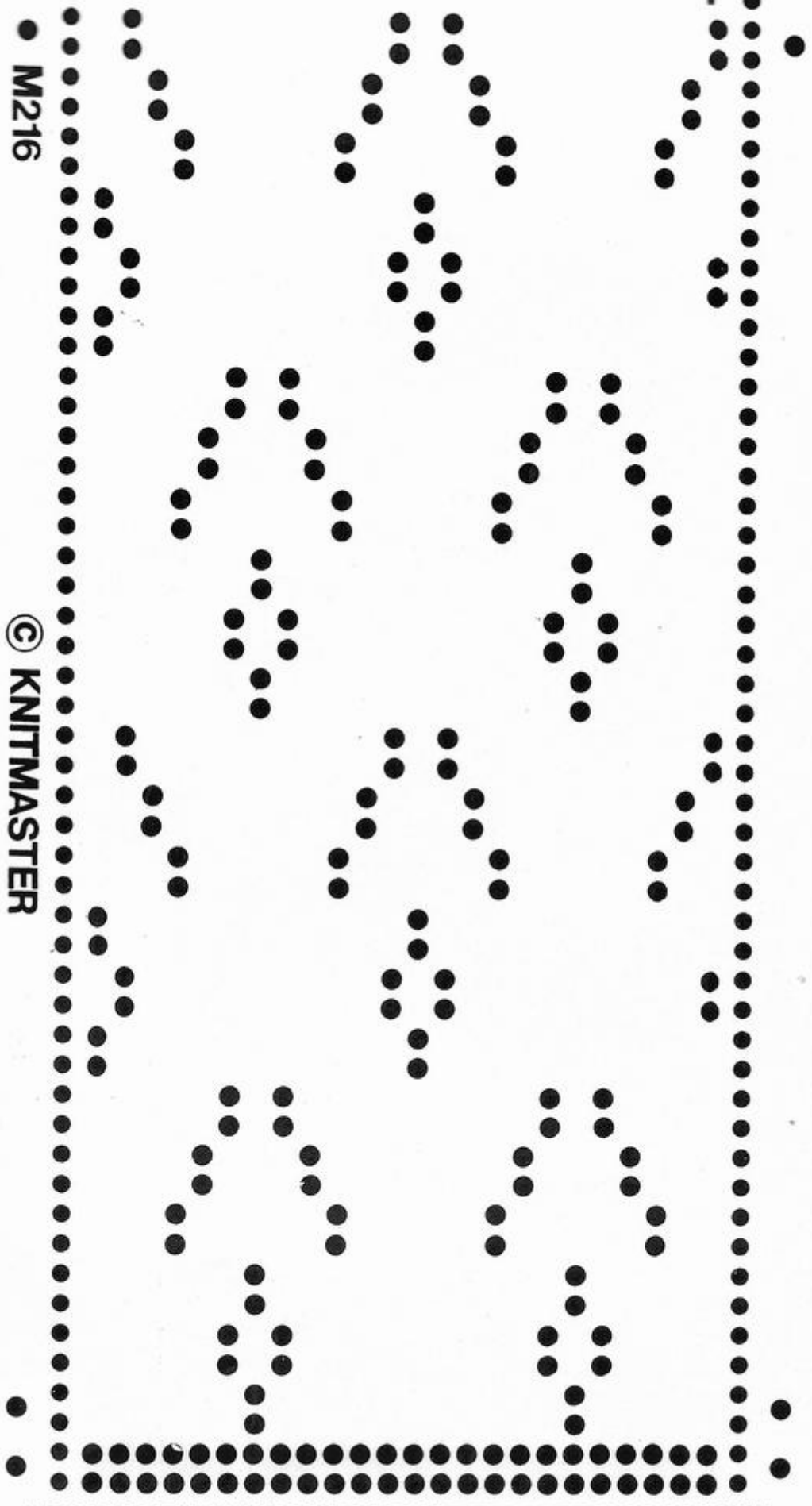


CUT HERE

HANDY PUNCH PATTERN Δ top

M216

© KNITMASTER



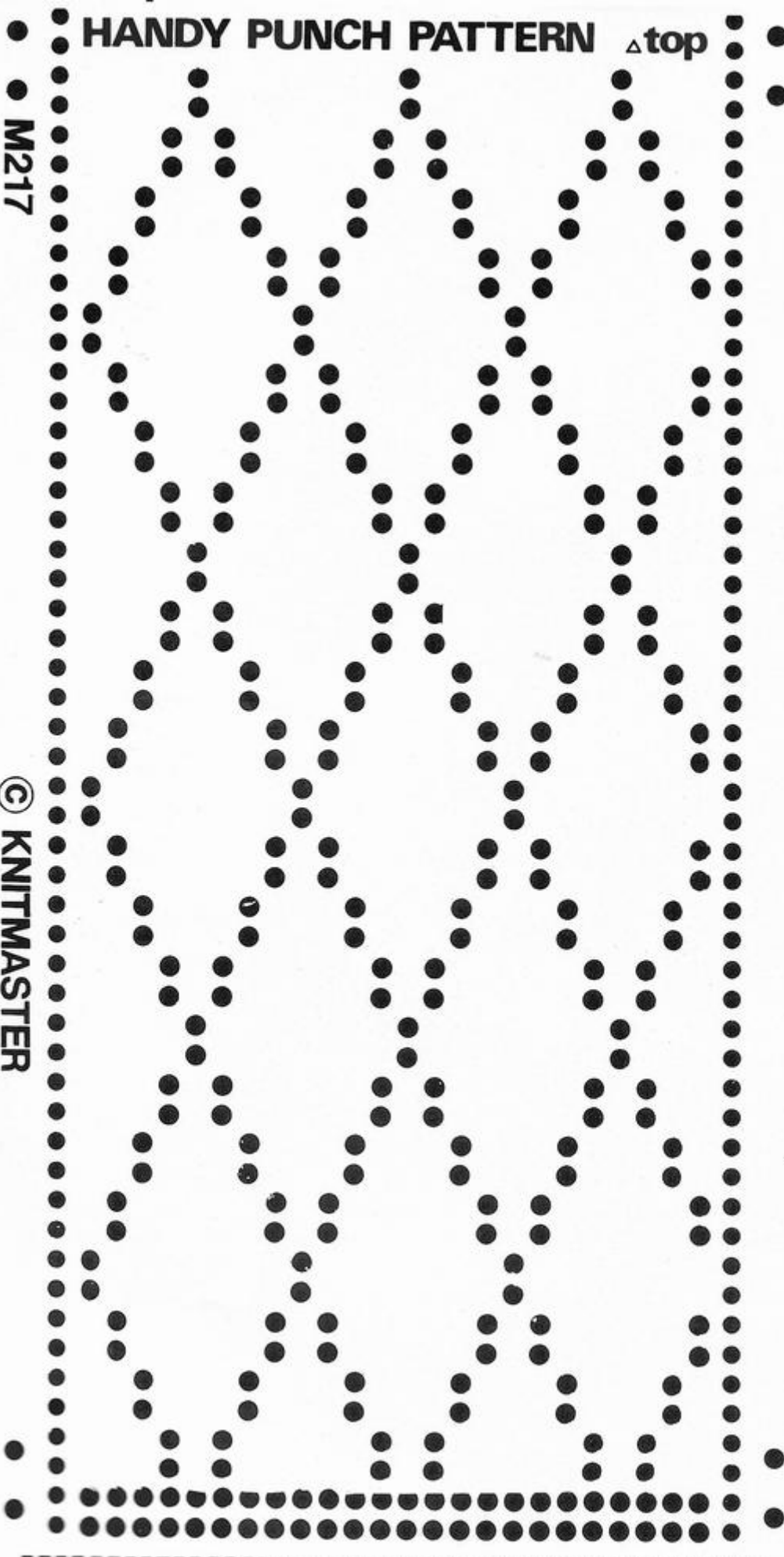
CUT HERE

HANDY PUNCH PATTERN Δ top

M217

© KNITMASTER

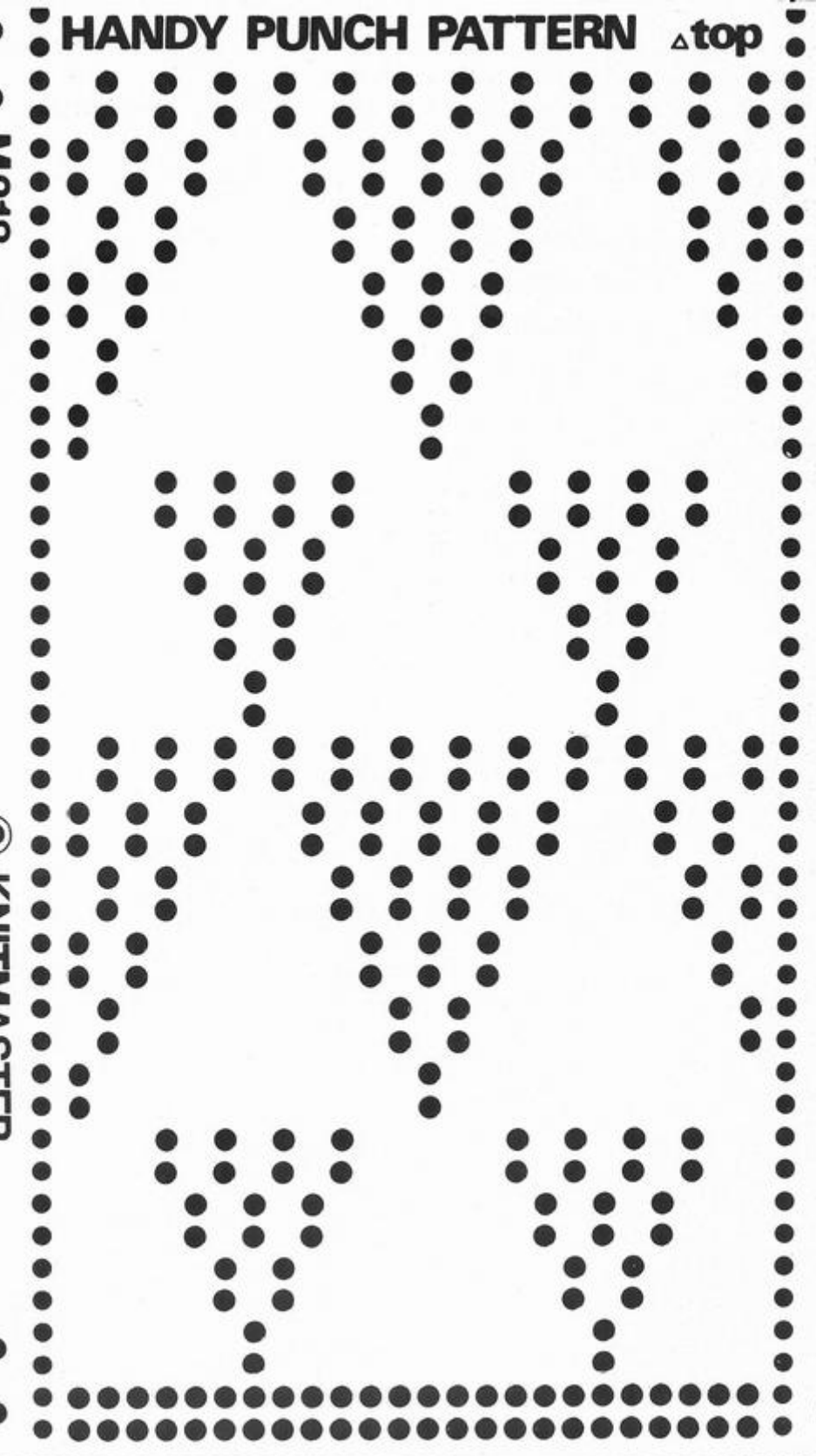
CUT HERE



HANDY PUNCH PATTERN Δ top

M218

© KNITMASTER



CUT HERE

HANDY PUNCH PATTERN Δ top

M219

© KNITMASTER

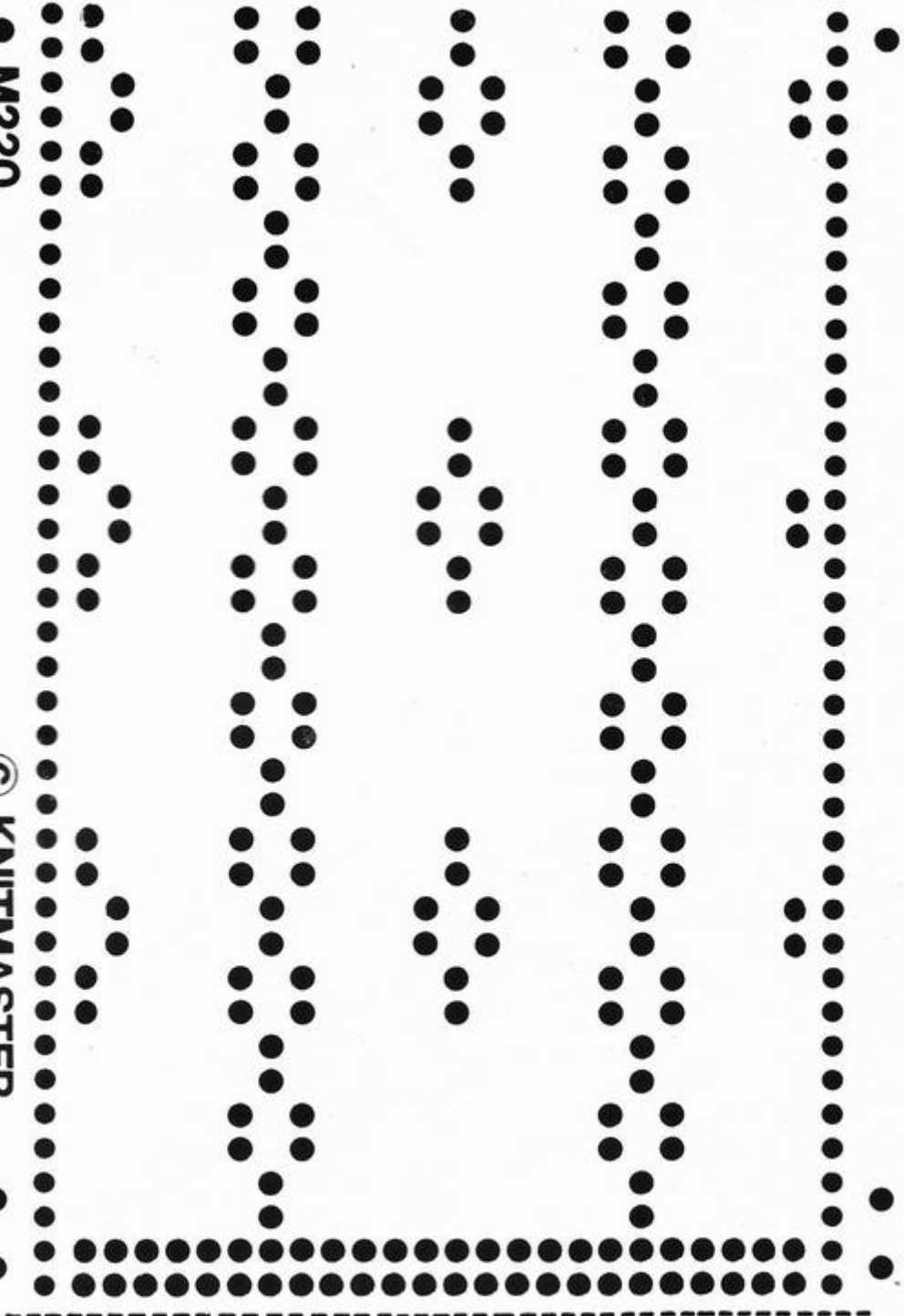


CUT HERE

HANDY PUNCH PATTERN Δ top

M220

© KNITMASTER



CUT HERE